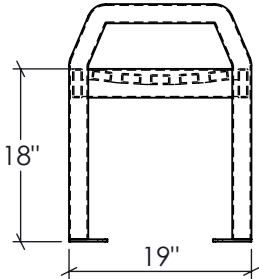
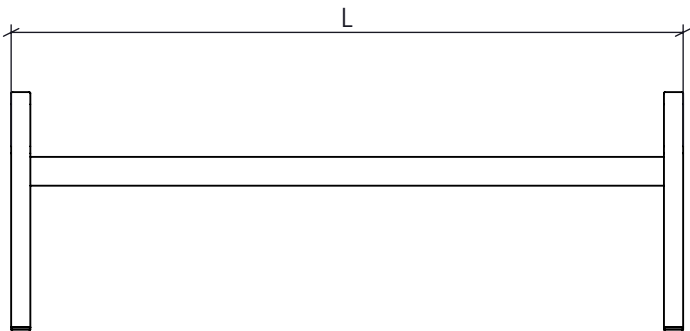
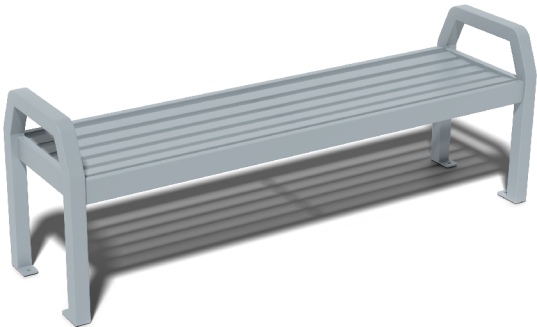
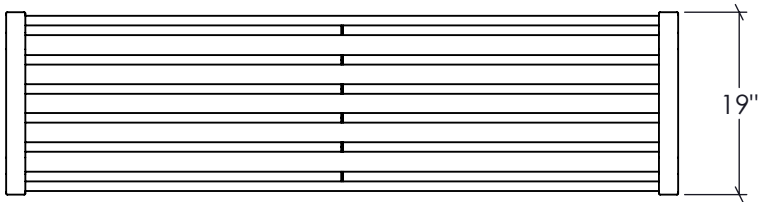




VENTURA BACKLESS BENCH

VENT-BB-48, VENT-BB-70, VENT-BB-94



Materials, Finishes, and Details

- Backless bench available in three standard lengths 48", 70" and 94". Seat height is 18".
- Fabricated from steel with a durable powder-coat finish.
- Stainless Steel Anchor tabs provided with 1/2" diameter holes for anchor bolts by others.

Product #	L	Weight	Design Uniform Load
VENT-BB-48	48	106 lbs.	1,000 lbs.
VENT-BB-70	70	140 lbs.	1,200 lbs.
VENT-BB-94	94	175 lbs.	1,200 lbs.

To Specify

- Specify VENT-BB-48, VENT-BB-70, VENT-BB-94 by DM Braun.
- Specify powder-coat color.
- For more detail regarding materials and color options visit www.dmbraunco.com/material-options.