



DM BRAUN  
Custom Site Furniture - USA Made



2022 Project & Product Book



DM BRAUN  
Custom Site Furniture - USA Made



---

[sales@dmbraunco.com](mailto:sales@dmbraunco.com) – 714-674-0855 – [www.dmbraunco.com](http://www.dmbraunco.com)

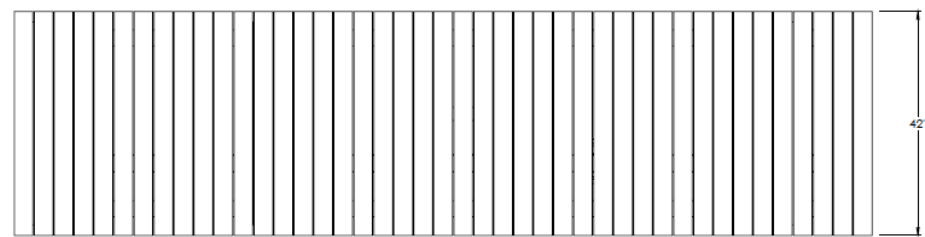
---

### **We are the CUSTOM custom site furniture experts**

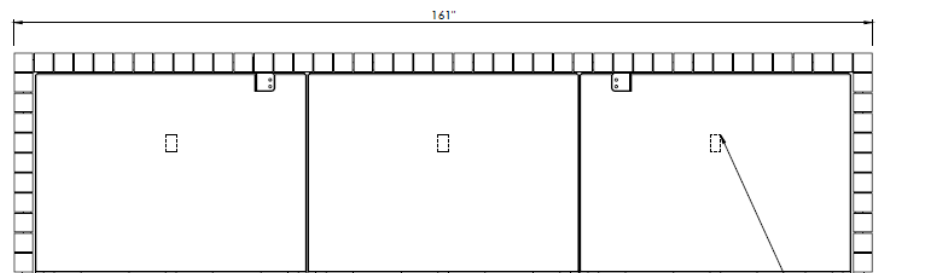
- DM Braun designs, engineers, and builds custom projects for our clients.
  - We DO NOT charge a fee to collaborate and consult with our clients, even if we are not awarded the project!
- DM Braun offers the widest range of wood species and material options.
  - Most wood species available
  - Powder coated steel, stainless steel, Corten steel, galvanized steel, metalized steel, aluminum
  - Synthetic lumber, plastic lumber
  - PVC woven products
  - Precast and GFRC concrete items
- DM Braun works with our clients to ensure they get exactly what they want.
  - We will recommend ideal materials for specific climates and traffic levels to ensure the longevity of our products.
- All of DM Braun's catalog items can be customized to fit the needs of your specific project.
  - Change the size, shape or materials to suite your needs.



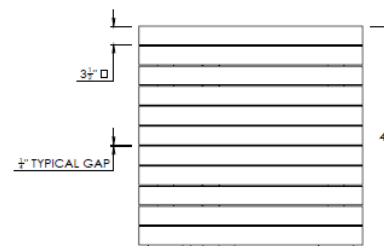
## **CUSTOM PROJECTS**



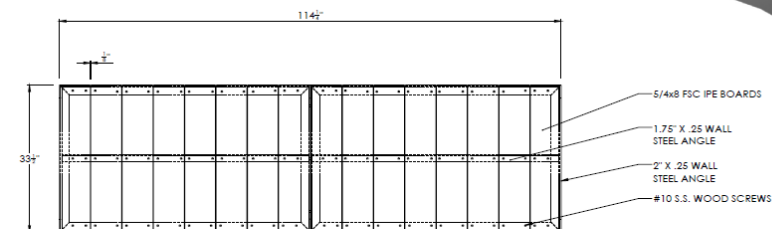
TOP VIEW



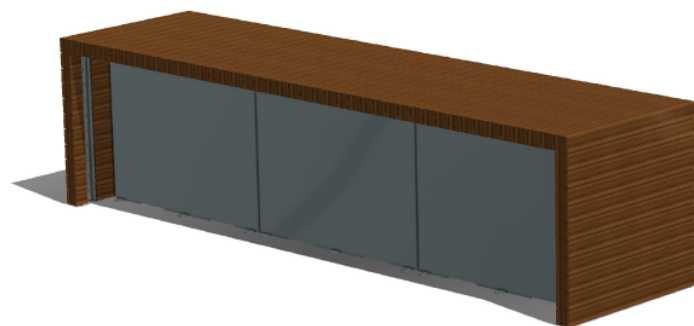
FRONT VIEW



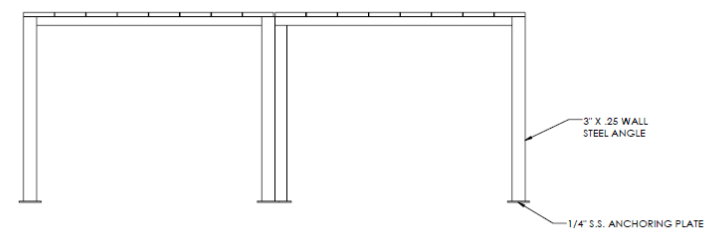
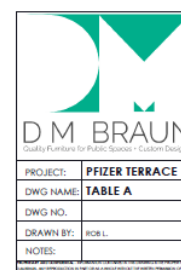
SIDE VIEW



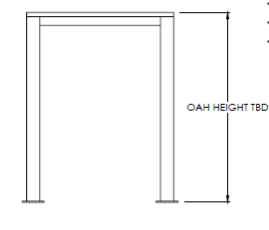
TOP VIEW



- NOTES:
- FSC IPE 4X4 NOMINAL BOARDS
  - IPE FINISHED WITH OUTDOOR PENETRATING SEALER
  - STEEL FRAMES W/ S.S. ANCHOR PADS (ANCHORING HARDWARE BY INSTALLER)
  - STEEL PANELS W/ S.S. HARDWARE (PROVIDED BY DM BRAUN)
  - STEEL FRAMES CONNECTED W/ S.S. HARDWARE (PROVIDED BY DM BRAUN)
  - S.S. #10 WOOD SCREWS

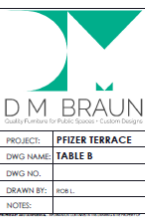


FRONT VIEW



SIDE VIEW

- NOTES:
- STEEL FABRICATION W/ S.S. ANCHOR PLATES
  - SANDBLASTED, PRIMED & POWDER COATED, COLOR TBD
  - FSC IPE - 6X6X8, FINISHED WITH OUTDOOR PENETRATING SEALER
  - S.S. HARDWARE



**Project:** Pfizer- Large format bar tables using FSC Ipe and custom steel frame work.

**Location:** New York City, NY

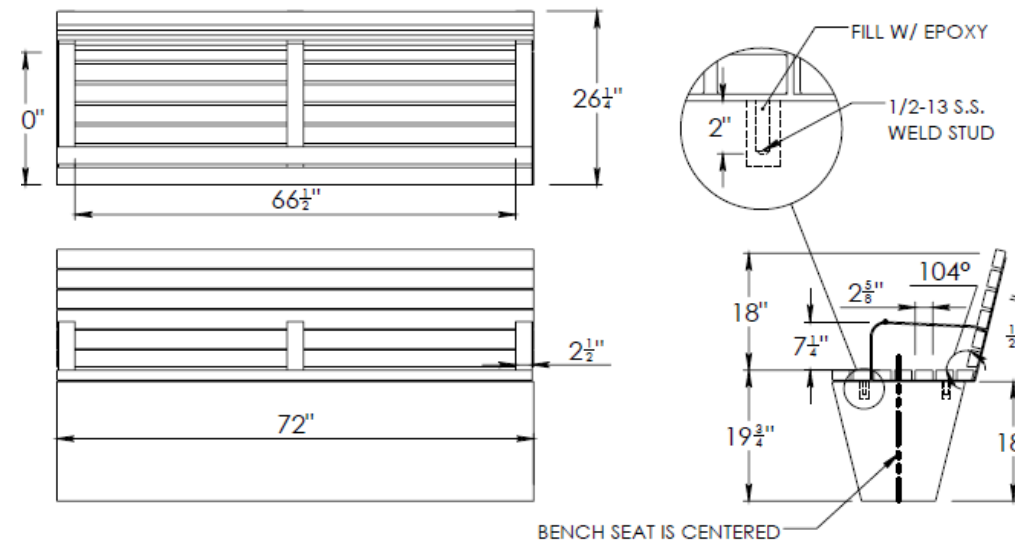
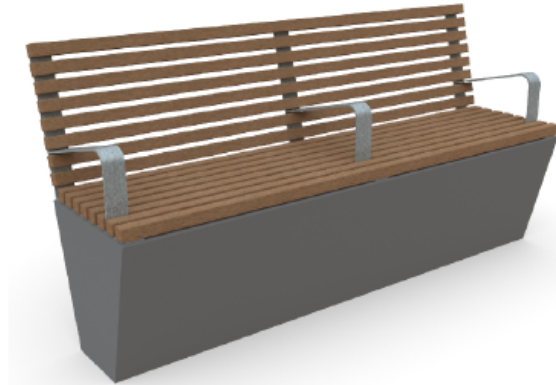
**Designer:** Designed by DM Braun & Company





#### PRECAST TOPPER MODEL: TI-001

- STEEL FRAME & ARMREST CONSTRUCTION.
- SANDBLASTED, PRIMED & POWDER-COAT FINISH.
- KEBONY WOOD SLATS.
- (2) COATS OF PENETRATING SEALER.
- ANCHOR SEAL ON ENDS.
- EDGES EASED TO 1/8" R.
- S.S. HARDWARE.
- STEEL STRAPS HAVE S.S. WELD STUDS USED FOR EPOXY ANCHORING ON TO CONCRETE.

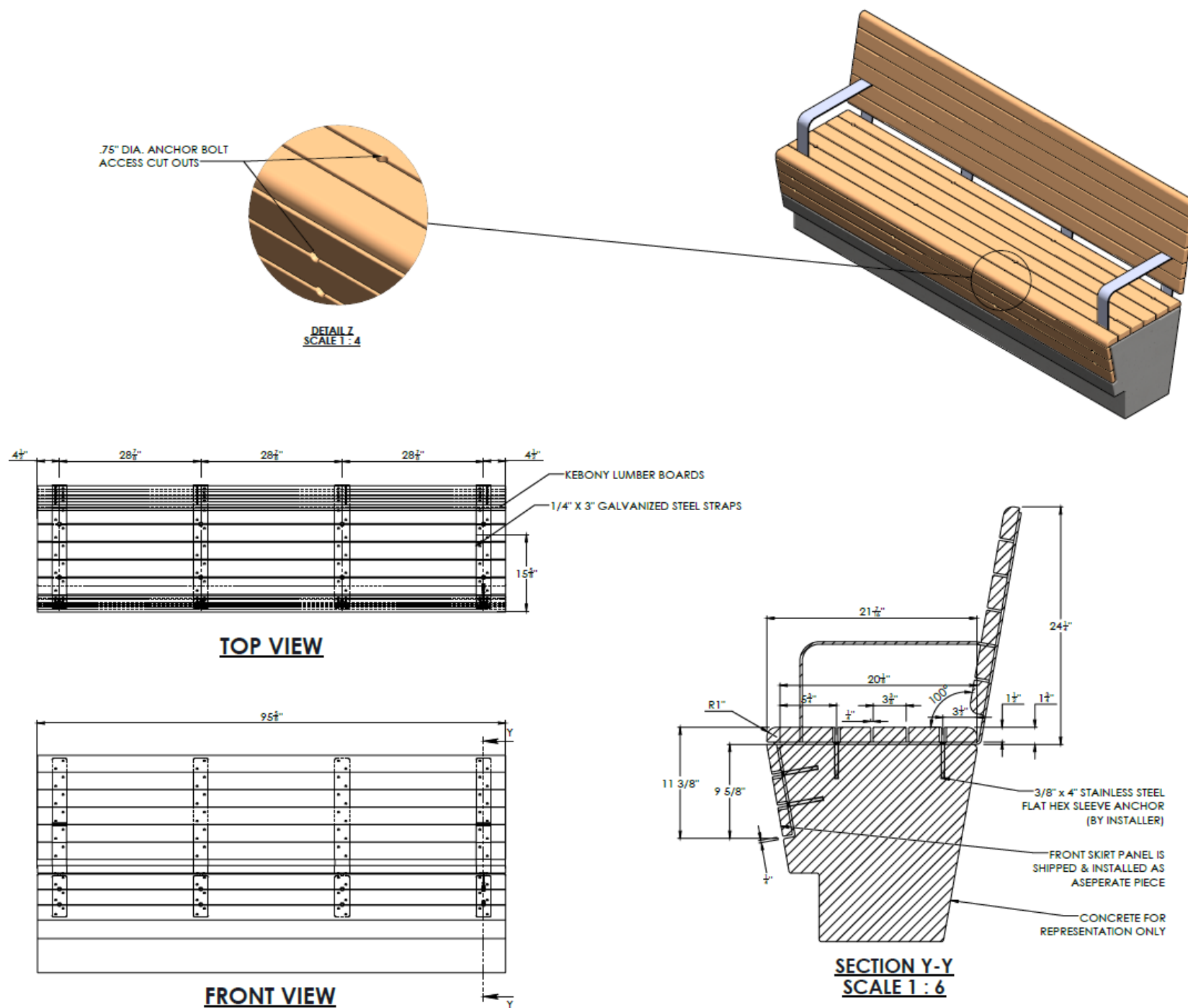


**Project:** Treasure Island Waterfront. Bench toppers mounted to precast concrete. We used Thermacor wood and powder coated steel frames.

**Location:** Treasure Island, CA

**Designer:** Designed by DM Braun & Company





**Project:** UCSF. Bench toppers mounted to precast concrete. We used Kebony wood and galvanized steel frames.

**Location:** San Francisco, CA

**Designer:** Designed by DM Braun & Company





**DM BRAUN**

Quality Furniture for Public Spaces • Custom Designs

23011 Alcalde Dr. Suite G

Laguna Hills, CA 92653

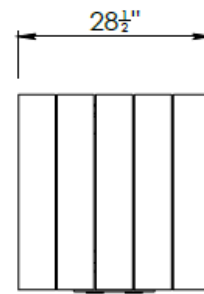
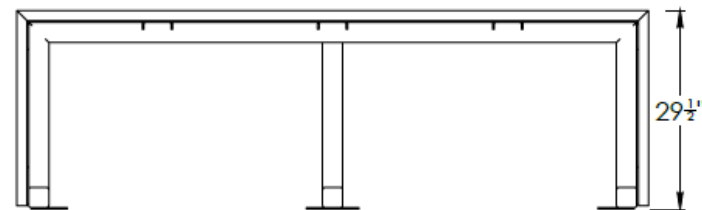
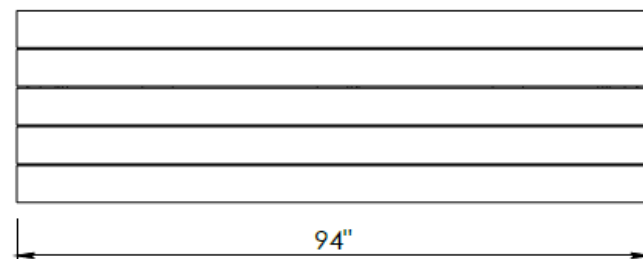
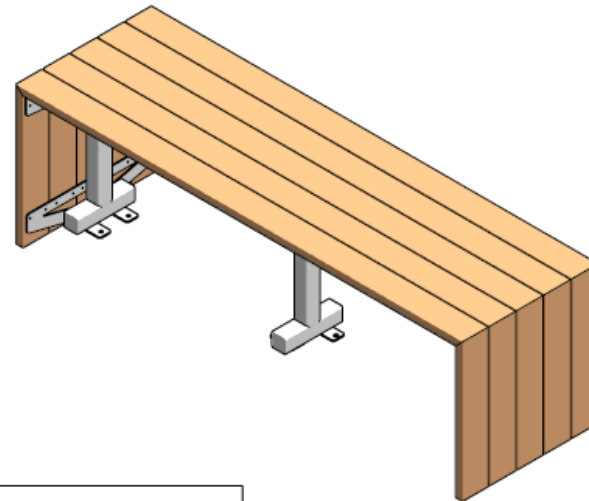
(714)-674-0855

info@dmbrunco.com

dmbrunco.com

#### MISSION VIEJO CUSTOM TABLE

- STEEL FRAME CONSTRUCTION.
- SANDBLASTED, PRIMED & POWDER-COAT FINISH.
- S.S. ANCHOR TABS WITH 1/2" DIA. HOLES.
- S.S. HARDWARE, HARDWARE FOR ANCHORING NOT INCLUDED.
- PREMIUM PLASTIC TABLE TOP BOARDS.
- UV RESISTANT.



**DM BRAUN**

Quality Furniture for Public Spaces • Custom Designs

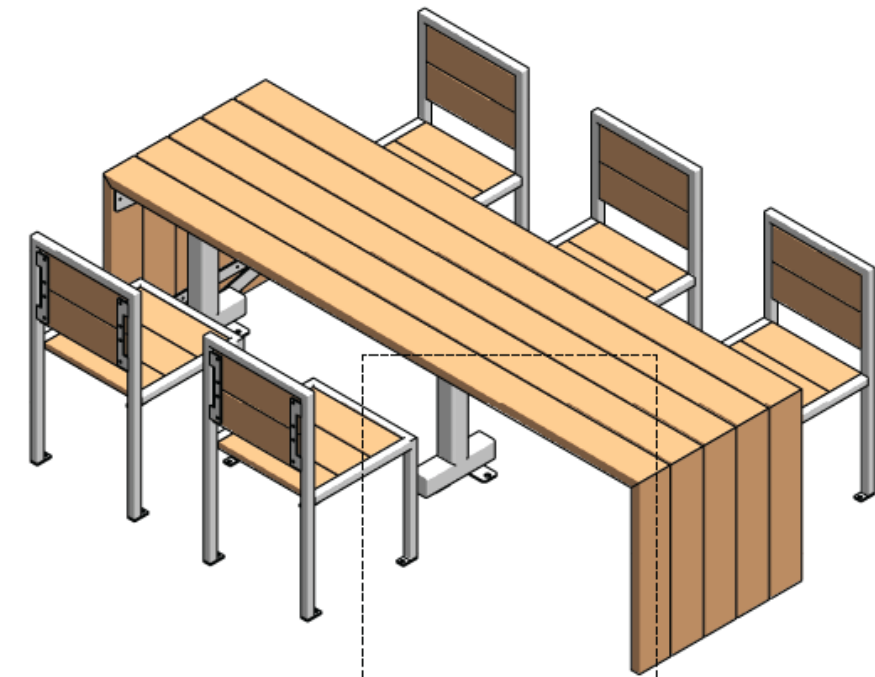
23011 Alcalde Dr. Suite G

Laguna Hills, CA 92653

(714)-674-0855

info@dmbrunco.com

dmbrunco.com



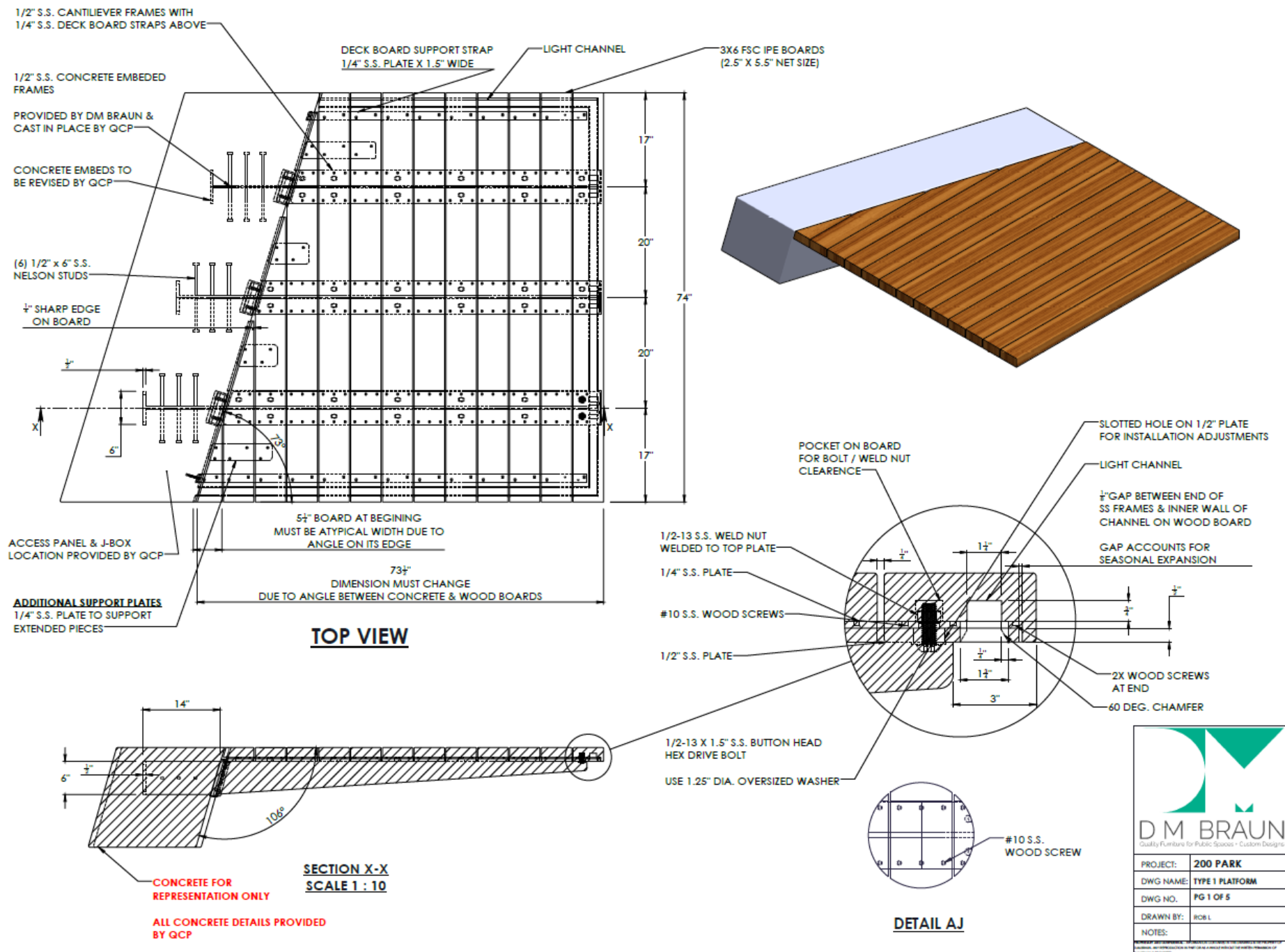
ADA COMPLIANT  
SPACING

**Project:** Oso Creek Trail. Large tables with matching chairs, ADA compliant. Frames are steel and cladding is synthetic lumber-AZEK.

**Location:** Mission Viejo, CA

**Designer:** Designed by Keith Rattay



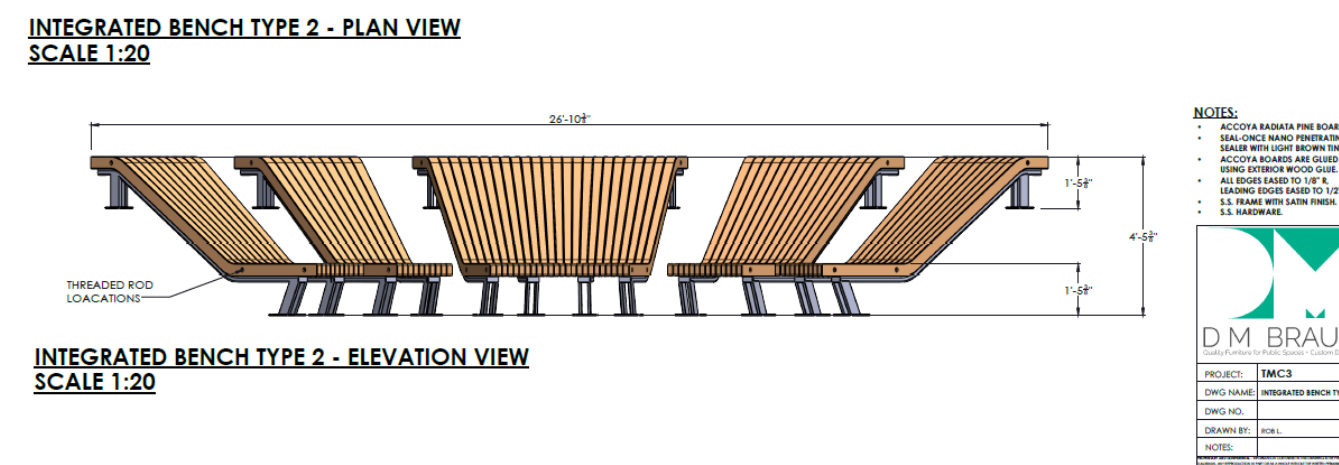
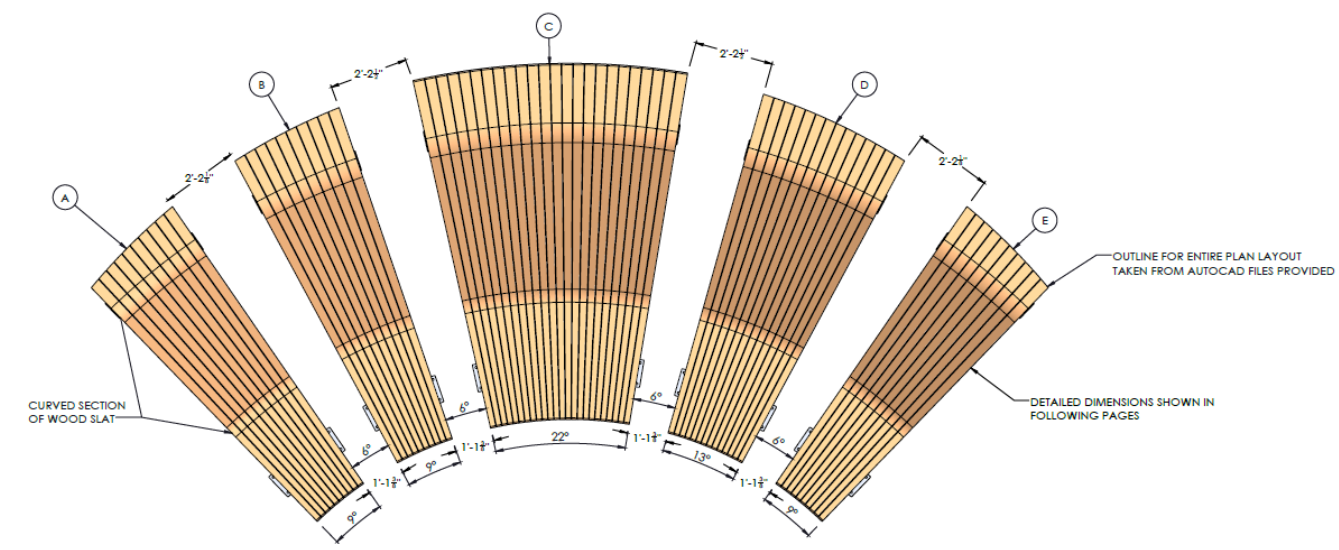
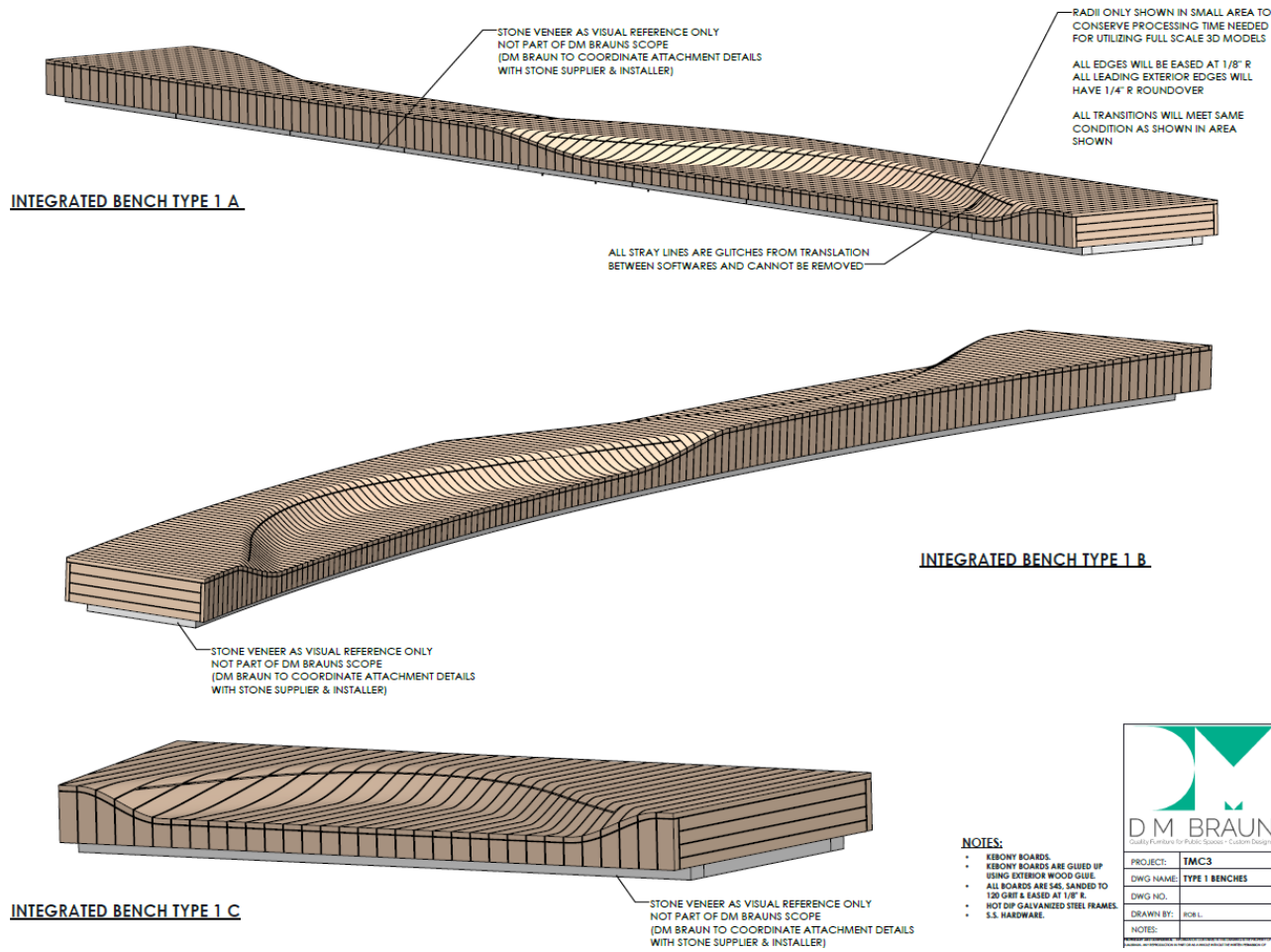


**Project:** 200 Park. Cantilever benches with 316 stainless steel frames. Wood is 3x6 FSC Ipe.

**Location:** San Francisco, CA

**Designer:** Designed by James Corner Field Operations





**Project:** Texas Medical Center 3. Custom glued up and CnC'd wood members on top of stainless-steel frame-work.

**Location:** Houston, TX

**Designer:** Designed by







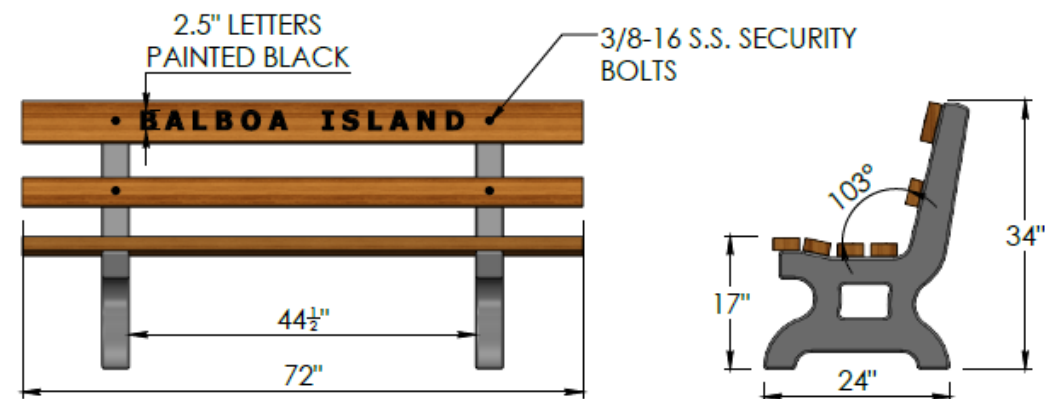
DM BRAUN

Quality Furniture for Public Spaces + Custom Designs

23011 Alcalde Dr. Suite G  
Laguna Hills, CA 92653  
(714)-674-0855  
info@dmbrunco.com  
dmbrunco.com

#### 6FT. BALBOA ISLAND BENCH

- JATOPA HARDWOOD BACKREST & SEAT BOARDS
- NO FINISH ON JATOPA BOARDS.
- "BALBOA ISLAND" LETTERS PAINTED BLACK.
- BLACK CONCRETE BENCH ENDS.
- S.S. SECURITY BOLTS AT EVERY BOARD CONNECTION.



**Project:** Balboa Island. Jatoba wood slats on top of precast concrete legs.

**Location:** Newport Beach, CA

**Designer:** Designed by DM Braun





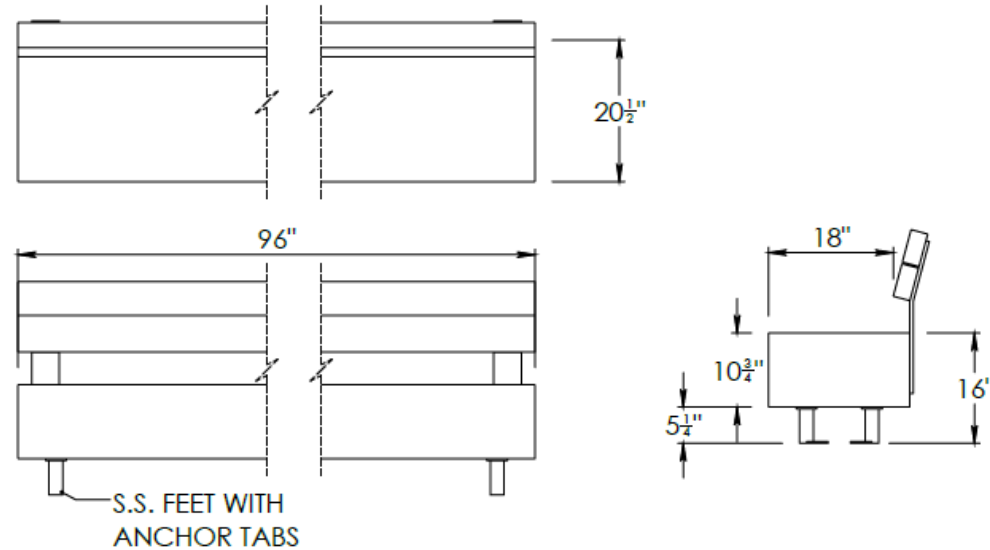
**DM BRAUN**

Quality Furniture for Public Spaces + Custom Designs

23011 Alcalde Dr. Suite G  
Laguna Hills, CA 92653  
(714)-674-0855  
info@dmbrunco.com  
dmbrunco.com

### GLU LAM BENCH

- SEAT IS KILN DRIED LAMINATED DOUGLAS FIR.
- SEAT HAS ONE COAT OF PENOFIN VERDE PENETRATING SEALER.
- ALL KNOTS IN LUMBER SHALL BE NATURAL, UNFILLED.
- FEET ARE S.S. WITH A SANDBLAST FINISH.



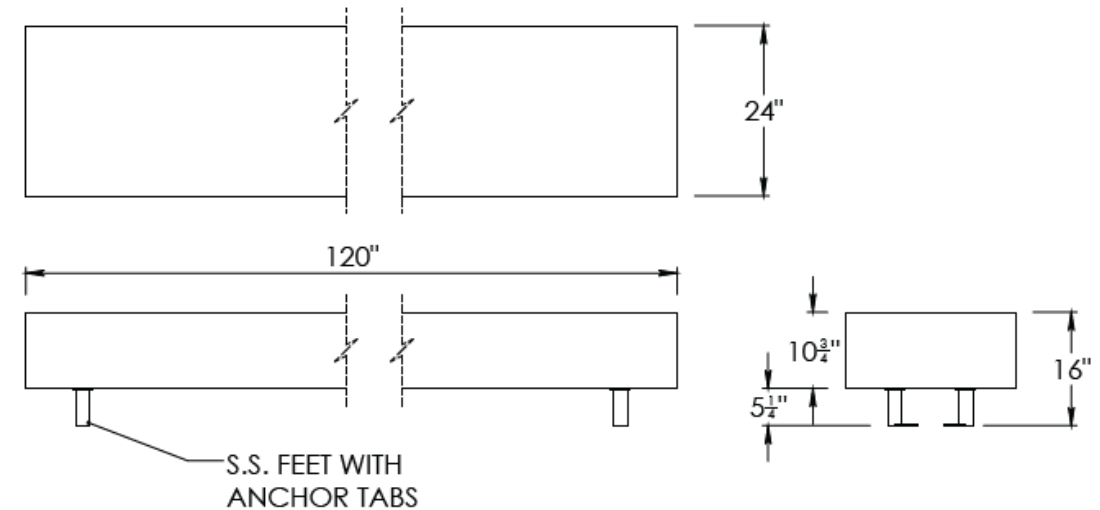
**DM BRAUN**

Quality Furniture for Public Spaces + Custom Designs

23011 Alcalde Dr. Suite G  
Laguna Hills, CA 92653  
(714)-674-0855  
info@dmbrunco.com  
dmbrunco.com

### GLU LAM BENCH

- SEAT IS KILN DRIED LAMINATED DOUGLAS FIR.
- SEAT HAS ONE COAT OF PENOFIN VERDE PENETRATING SEALER.
- ALL KNOTS IN LUMBER SHALL BE NATURAL, UNFILLED.
- FEET ARE S.S. WITH A SANDBLAST FINISH.



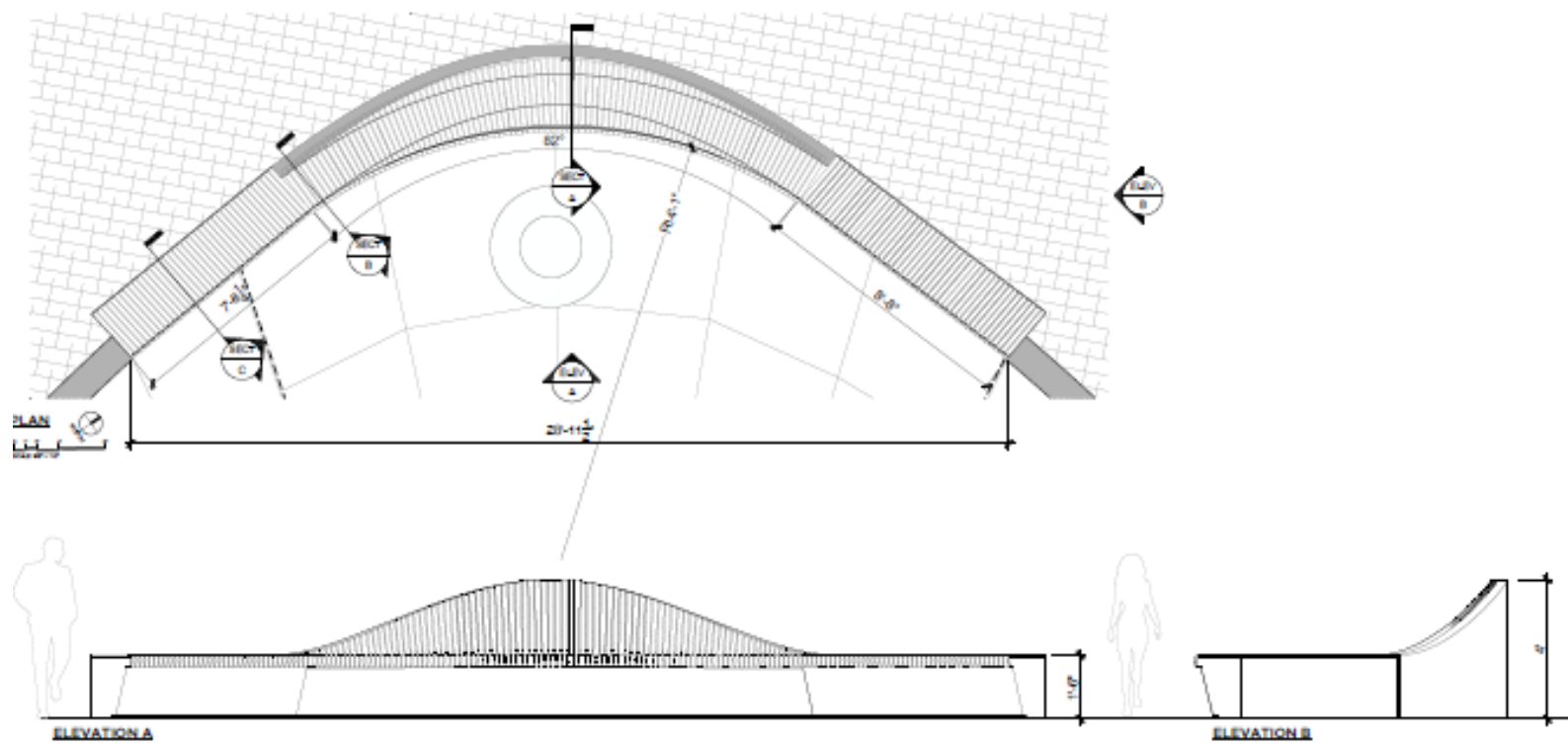
**Project:** Toledo Metro Parks. Glue-lam beam benches with and without backrests. Stainless steel frames.

**Location:** Toledo, OH

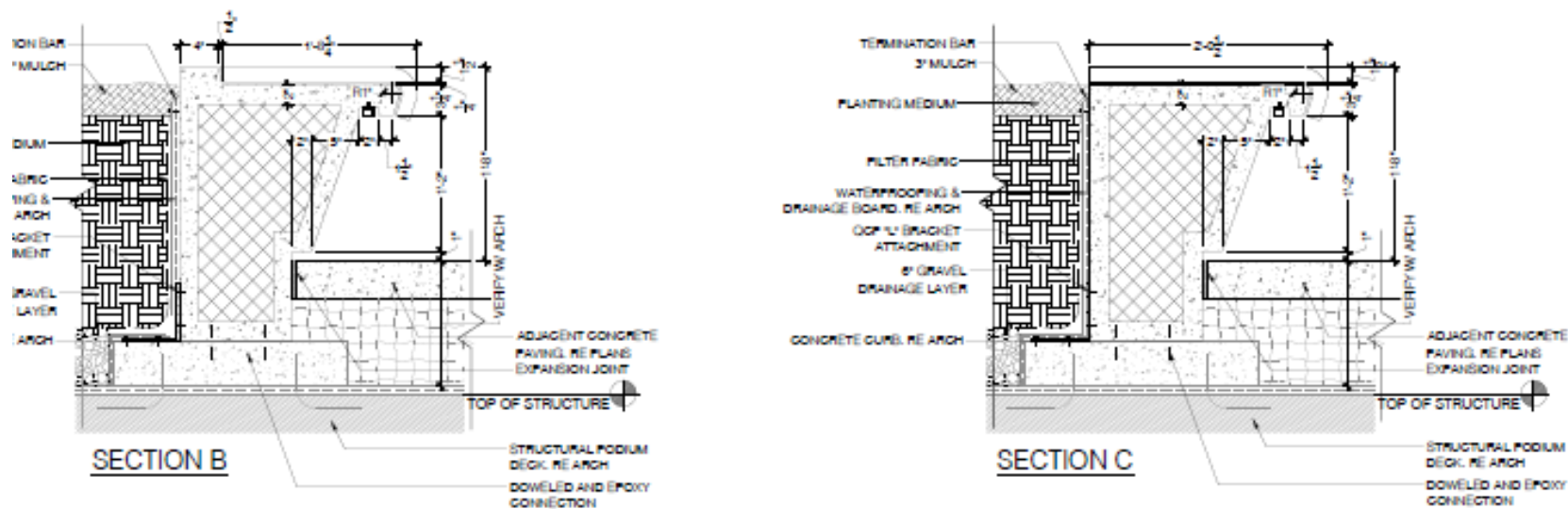
**Designer:** Designed by DM Braun







GFRP FEATURE SEATWALL - PLAN & ELEVATIONS

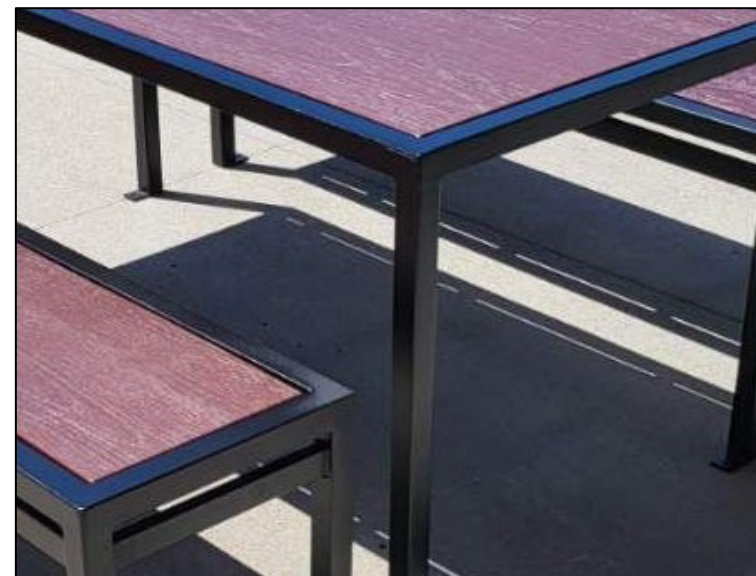


**Project:** Scripps La Jolla. Ipe and Kebony wood bench toppers with steel frames. Custom CnC work for curved sections.

**Location:** La Jolla, CA

**Designer:** Designed by MIG Landscape Architecture



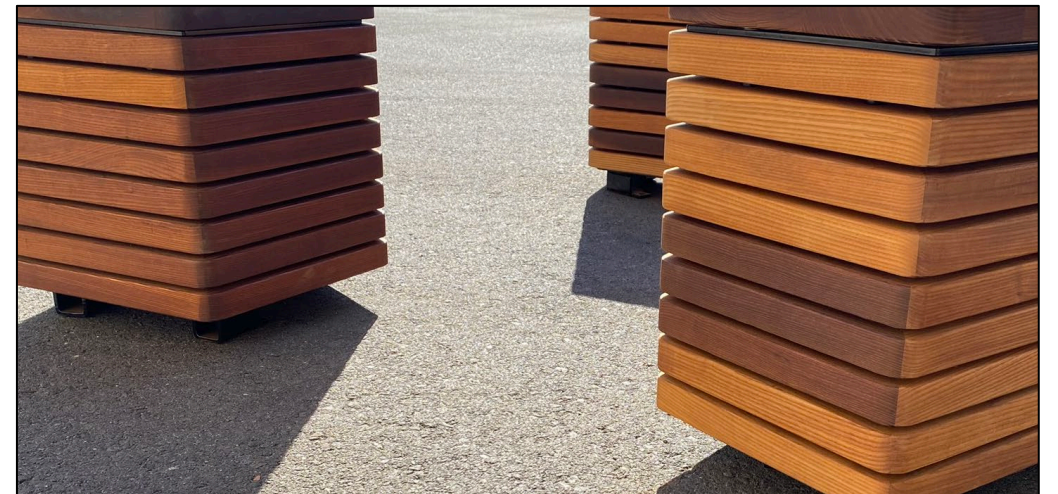


**Project:** Del Mar Elementary School. Picnic tables with benches & standing tables with barstools. Synthetic sheet material for all surfaces, steel frames for all structures.

**Location:** Del Mar, CA

**Designer:** Designed by DM Braun & Company





**Project:** 831 Mitten- Extensive glue up work combined with templating and CnC work to create these layered pedestal eating units. Wood is Thermacor.

**Location:** Burlingham, CA

**Designer:** Designed by DM Braun & Company





**Project:** Town of Marshfield. Precast concrete planters and benches with Ipe wood cladding. We used architectural grade exposed fasteners to attached the wood cladding.

**Location:** Marshfield, MA

**Designer:** Designed by DM Braun & Company for Furngully





**Project:** City of Hope – Custom Litter and Recycle receptacles. Full steel with metallic powder coating.

**Location:** Irvine, CA

**Designer:** Designed by DM Braun & Company





**Project:** Library Park. Powder coated steel benches designed to fit into pockets molded into precast concrete.

**Location:** Library Park, CT

**Designer:** Designed in collaboration with QCP



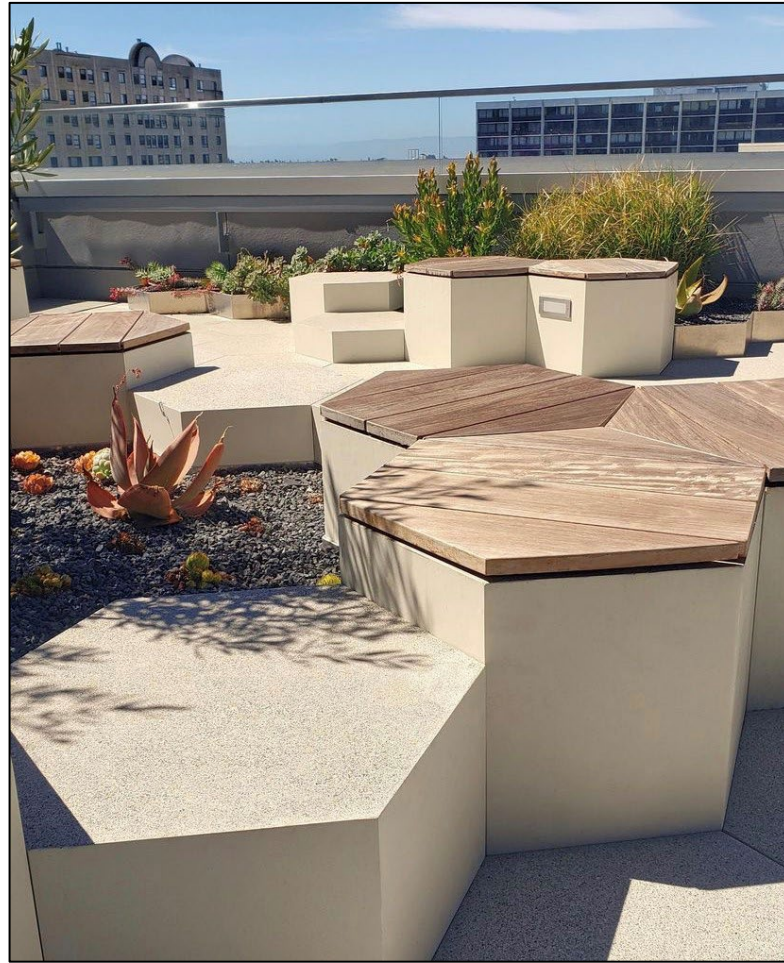
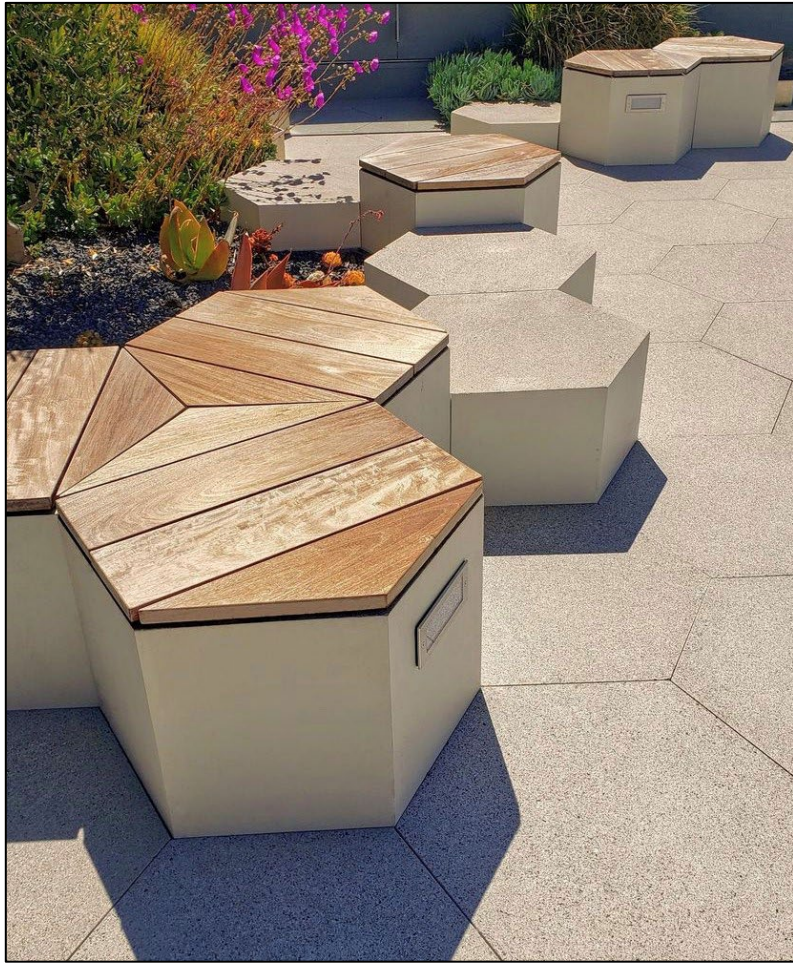


**Project:** Washington Plaza. Custom CnC'd Kebony wood bench toppers. Steel Straps used to secure wood slats together. Anchor studs on the steel straps secure the wood toppers to the precast concrete.

**Location:** Washington Plaza, NY

**Designer:** HM White





**Project:** UCSC. Custom shaped hexagon wood toppers that sit atop hexagon precast concrete bases.

**Location:** University of Santa Cruz

**Designer:** QCP



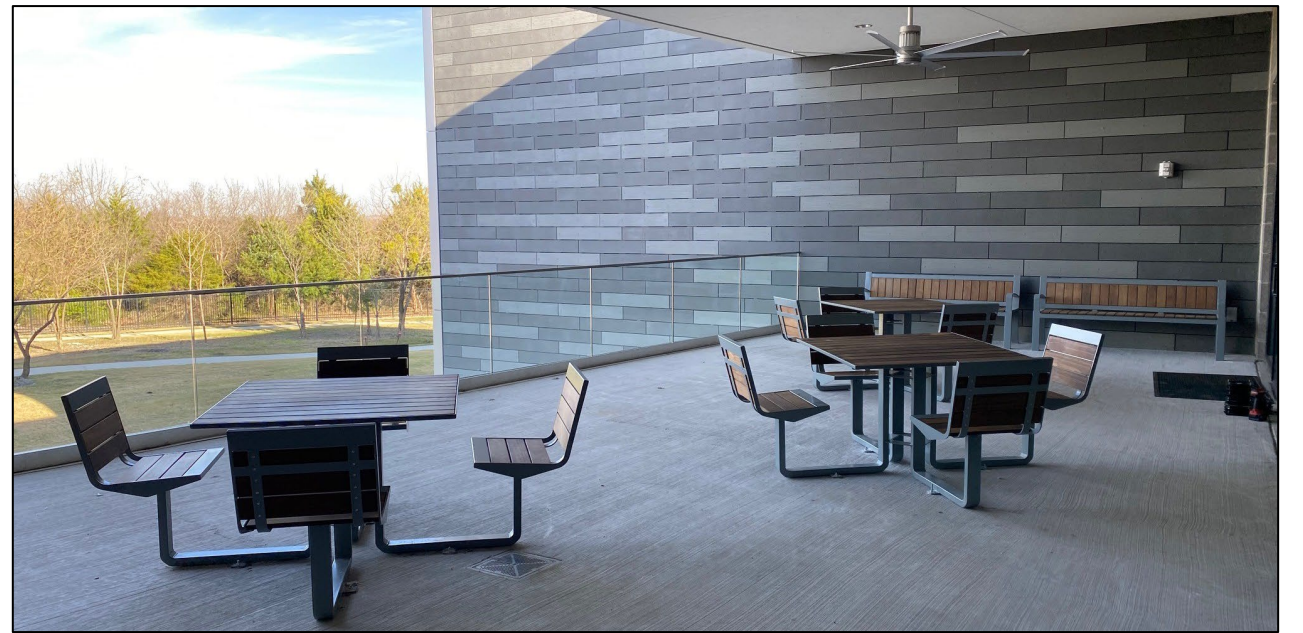


**Project:** Cupertino City Center. Backed and no back benches with galvanized steel frames. Backed benches are freestanding and no back benches are mounted to precast concrete.

**Location:** Cupertino, CA

**Designer:** WRNS Studio





Continued on the next page...



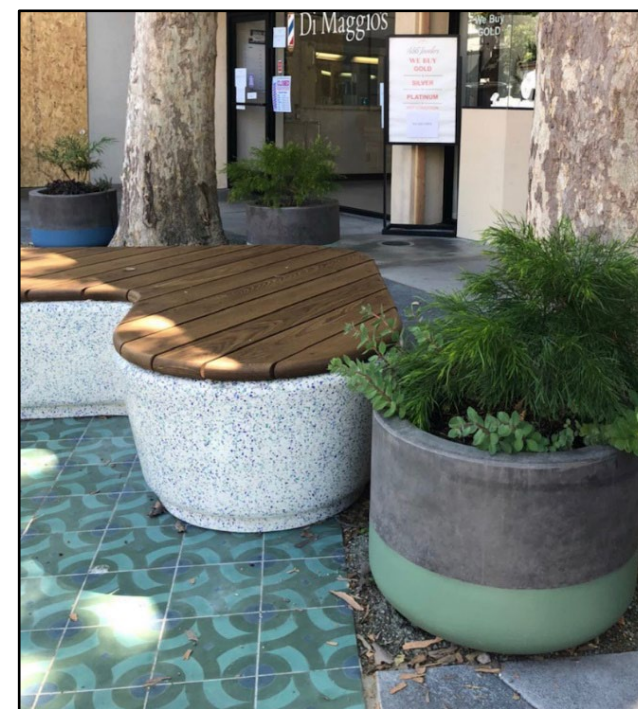
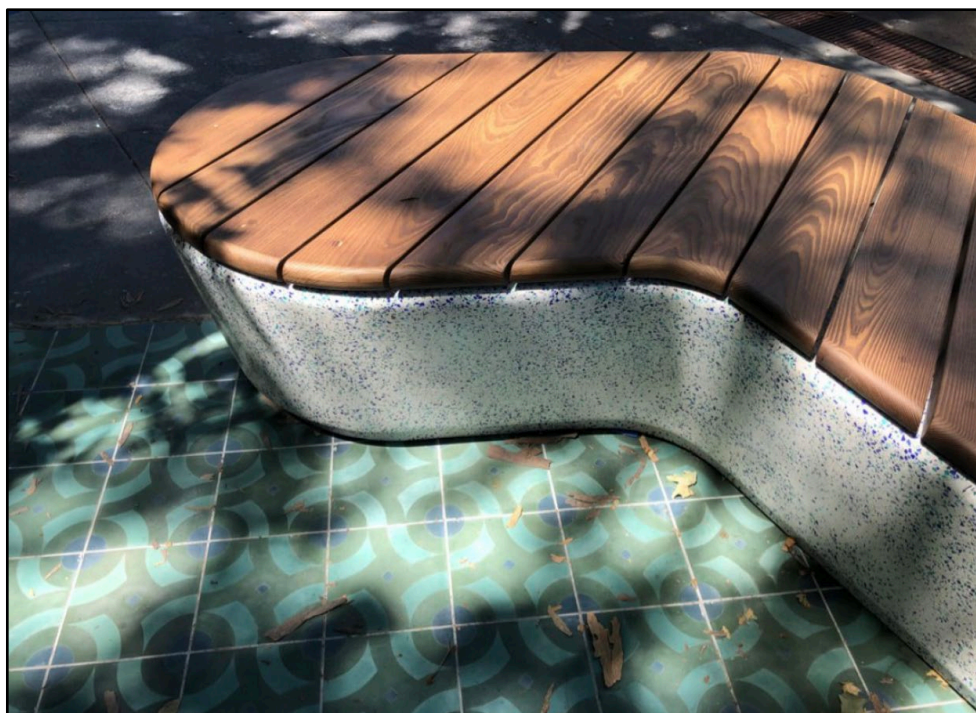


**Project:** Vanguard High School. Steel frames picnic tables with round and square tops. Picnic ensembles, litter receptacles with rain hoods, backed park style benches and custom serpentine benches with build in tabletops.

**Location:** Mesquite, TX

**Designer:** DM Braun





**Project:** Cypress Corner. Wood: Thermory with clear sealer made to fit perfectly on top of a custom made precast concrete benches.

**Location:** Walnut Creek, California

**Architect:** Base Landscape Architecture





**Project:** Array Torrey Pines. Kebony wood benches. Backed and no back benches anchored to precast concrete.

**Location:** San Diego, California

**Architect:** RMR Group





**Project:** San Francisco International Airport. Wood: Kebony with clear sealer. Giant wood panels made for an exact fit into precast concrete bases (precast by QCP).

**Location:** SFO Airport, California

**Architect:** Groundworks Office





**Project:** City of Mission Viejo custom lakeside chairs. Made from steel, metalized and powder coated for extra durability. Slats made from plastic lumber.

**Location:** Lake Mission Viejo, California

**Designer:** Keith Rattay – City of Mission Viejo





**Project:** Custom Irvine Company Furniture, Steel lounge chairs, love seats and tables with hidden anchors. Custom cushions.

**Location:** Woodbridge, California

**Designer:** Irvine Company





**Project:** Inland Empire Health Plan. Custom benches, picnic tables, precast concrete w/wood toppers and litter receptacles. All made using Kebony wood with steel frames.

**Location:** Rancho Cucamonga, California

**Architect:** Architerra Design Group





**Project:** Inland Empire Health Plan Continued...



## **"Off The Shelf Product"**

All of the following products can be customized in all ways to fit your needs:

- Choose all the materials
- Customize the size and shape
- Choose the colors

These items are meant to be idea starters for you. You can get them exactly as designed already, but you do not have to.

# THE ELEMENT LINE

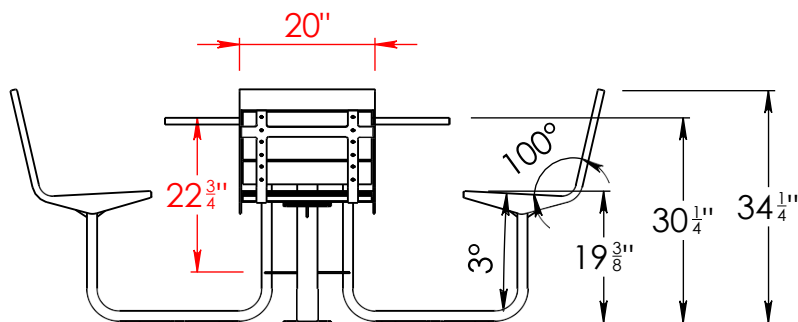
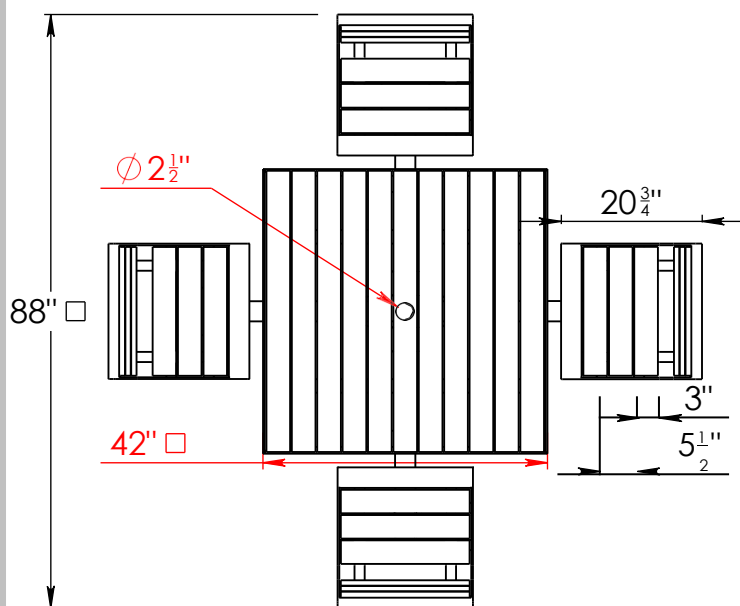


A complete product line that is adaptable for small- and large-scale projects alike. Select only the items you need and customize them for your site's design aesthetic.



## **ELEMENT PICNIC TABLE + SWIVEL CHAIRS**

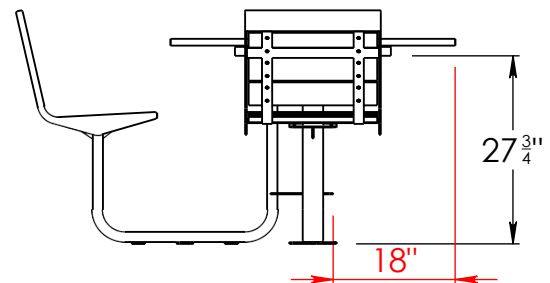
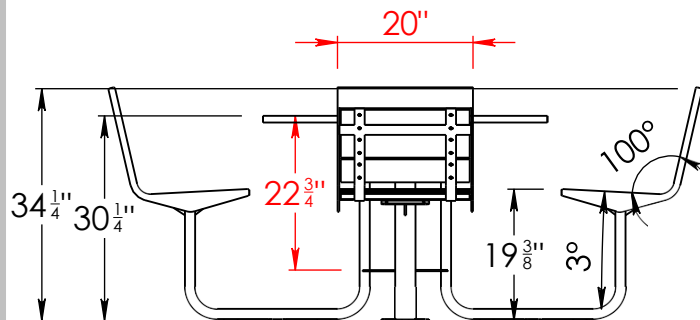
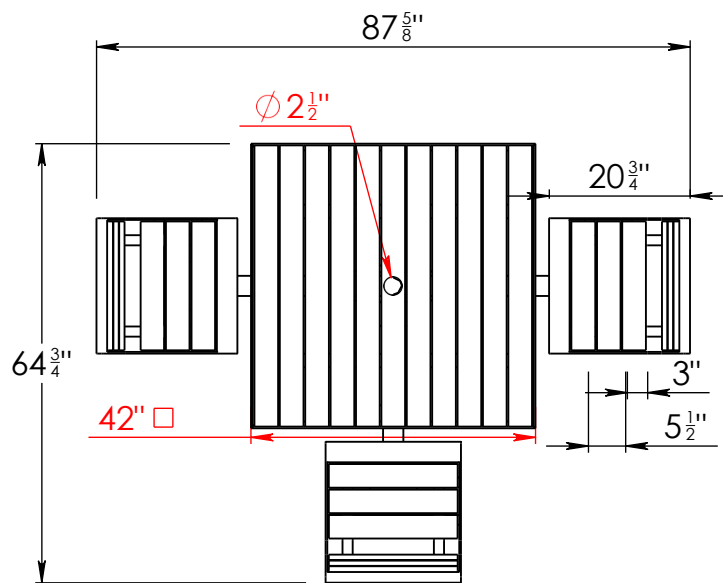
- STEEL CONSTRUCTION.
- STEEL IS SANDBLASTED, PRIMED & POWDER-COATED.
- 2.5" DIA. UMBRELLA HOLE WITH WELDED UMBRELLA BASE.
- S.S. ANCHOR TABS.
- S.S. HARDWARE.
- SYNTHETIC LUMBER SLATS – REQUIRES NO FINISH, OR REFINISHING.
- ENTIRE UNIT IS SHIPPED ASSEMBLED AND READY FOR ANCHORING.





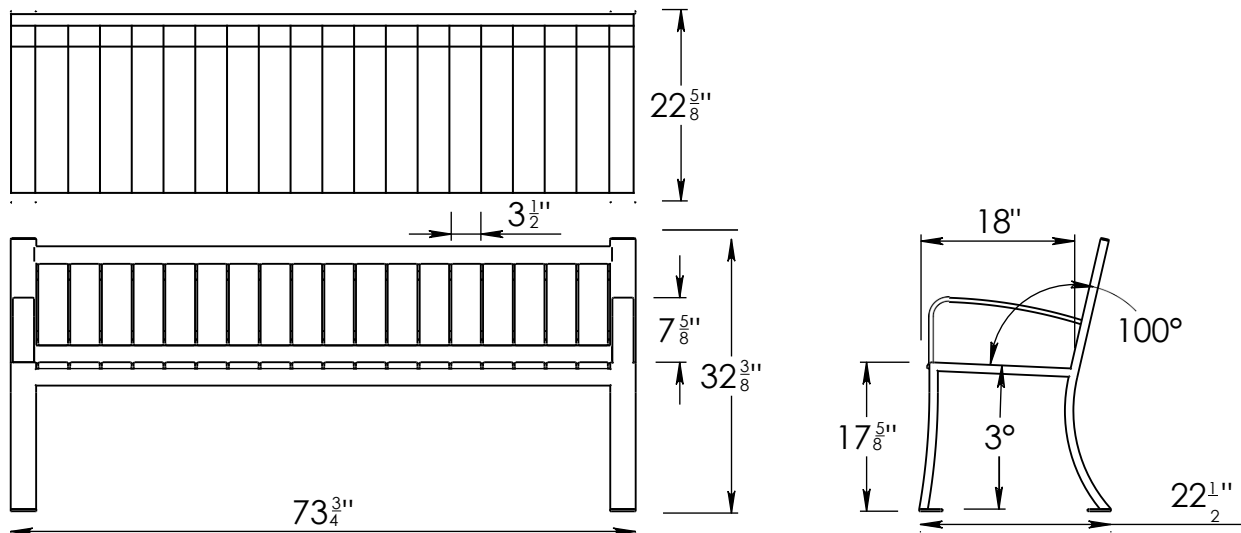
### **ELEMENT ADA PICNIC TABLE + CHAIRS**

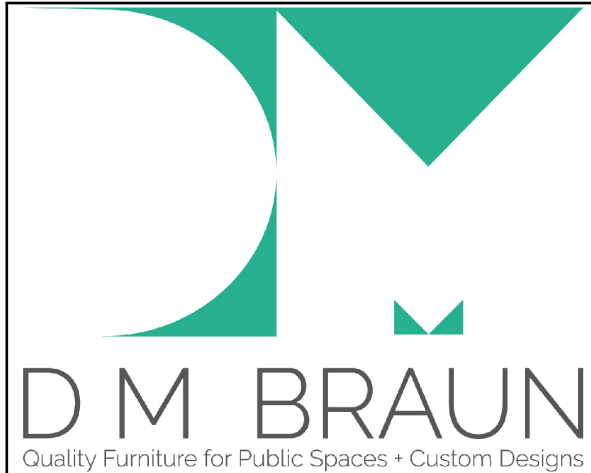
- STEEL CONSTRUCTION.
- STEEL IS SANDBLASTED, PRIMED & POWDER-COATED.
- 2.5" DIA. UMBRELLA HOLE WITH WELDED UMBRELLA BASE.
- S.S. ANCHOR TABS.
- S.S. HARDWARE.
- SYNTHETIC LUMBER SLATS – REQUIRES NO FINISH, OR REFINISHING.
- ENTIRE UNIT IS SHIPPED ASSEMBLED AND READY FOR ANCHORING.



## **ELEMENT 6' BENCH**

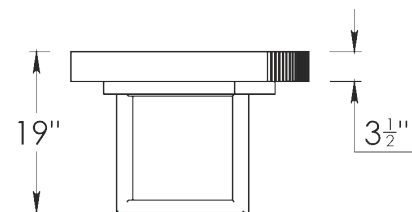
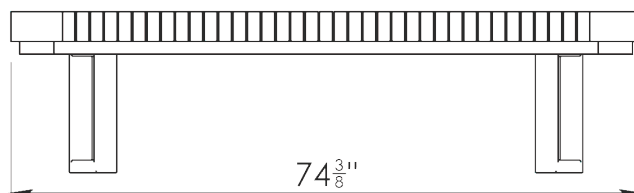
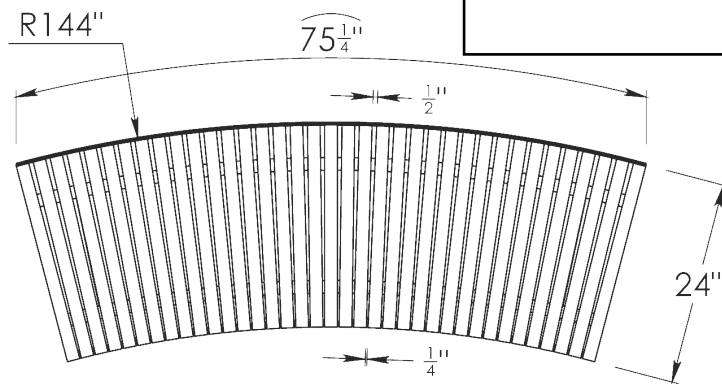
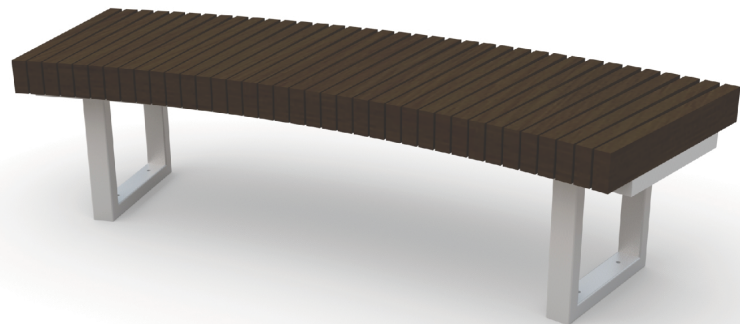
- STEEL CONSTRUCTION.
- SANDBLASTED, KPRIMED & POWDER-COATED.
- S.S. ANCHOR FEET.
- S.S. HARDWARE.
- SYNTHETIC LUMBER SLATS – REQUIRES NO FINISH, OR REFINISHING.





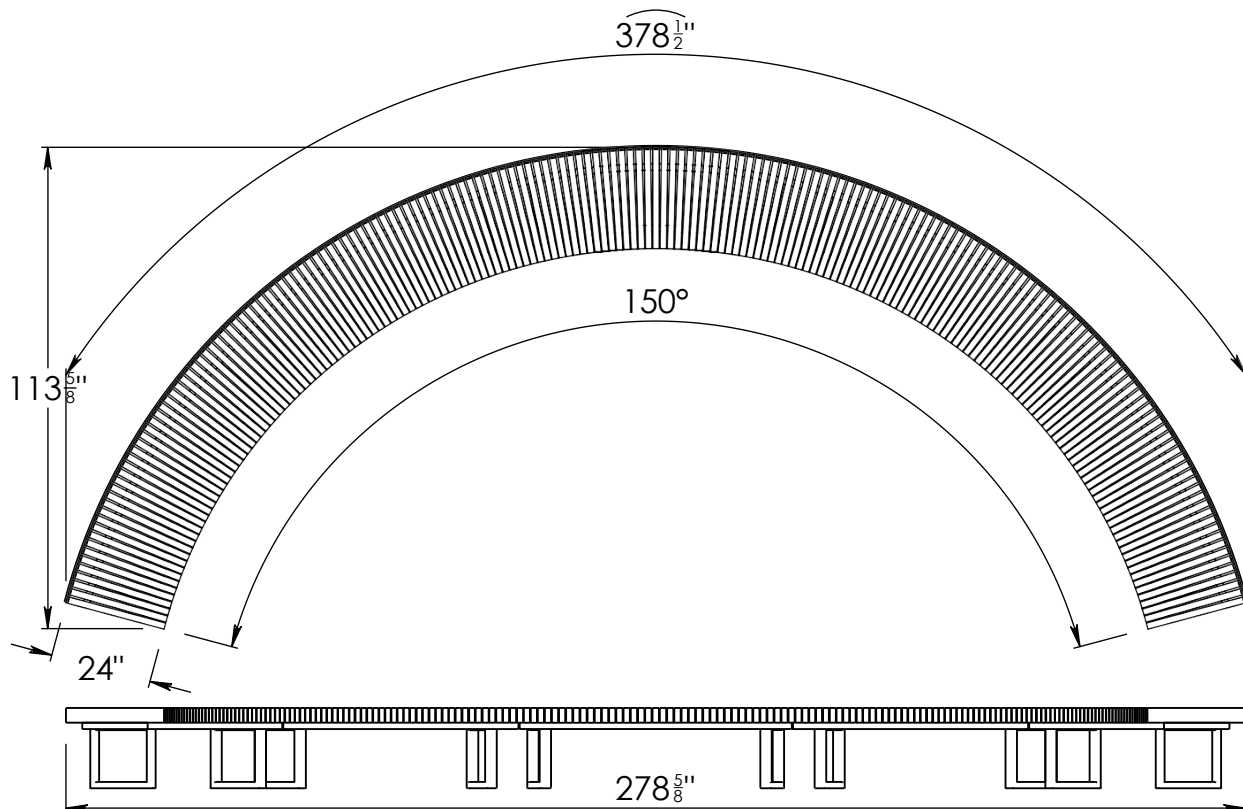
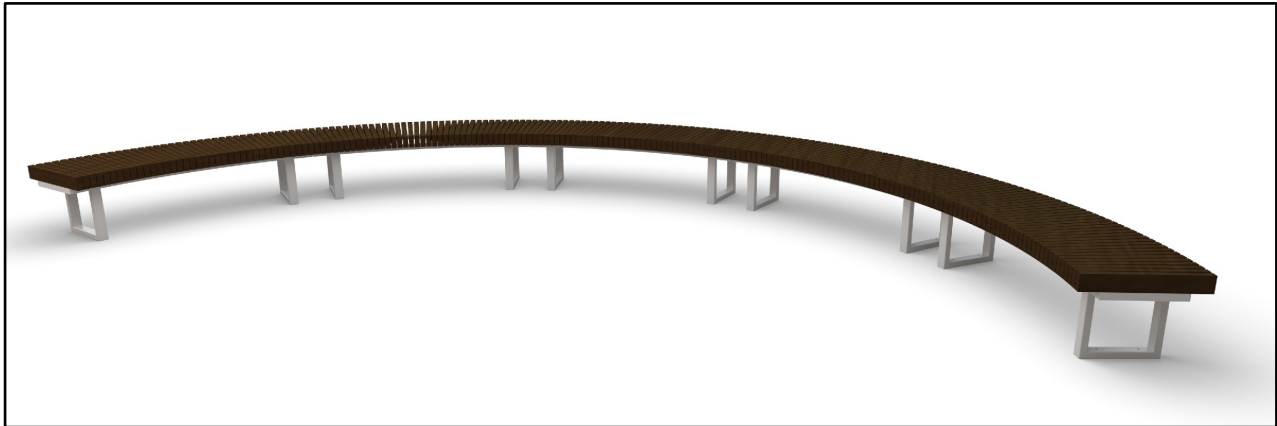
## ELEMENT RADIUS BENCH

- STEEL CONSTRUCTION.
- STEEL FRAME IS HOT-DIPPED GALVANIZED.
- S.S. HARDWARE.
- KEBONY SEAT SLATS.
- ENTIRE BENCH IS ASSEMBLED WITH (5) OF THE SECTIONS SHOWN BELOW, SEE PAGE 2 FOR DETAILS.



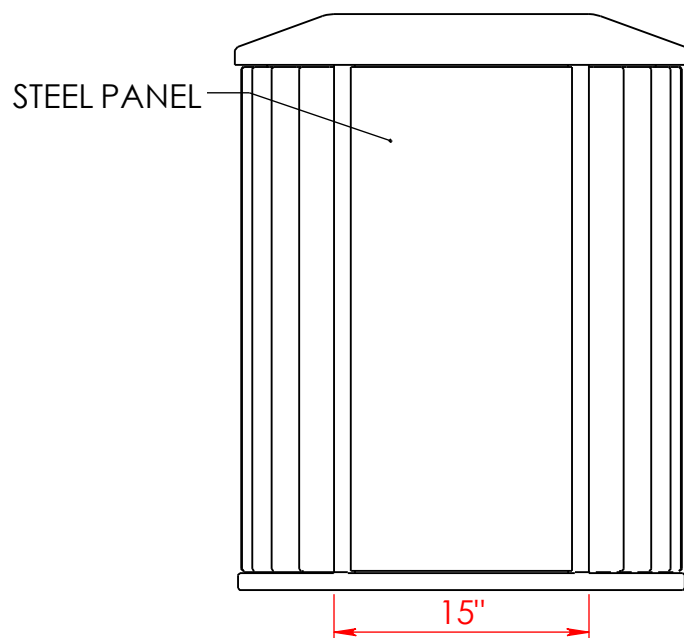
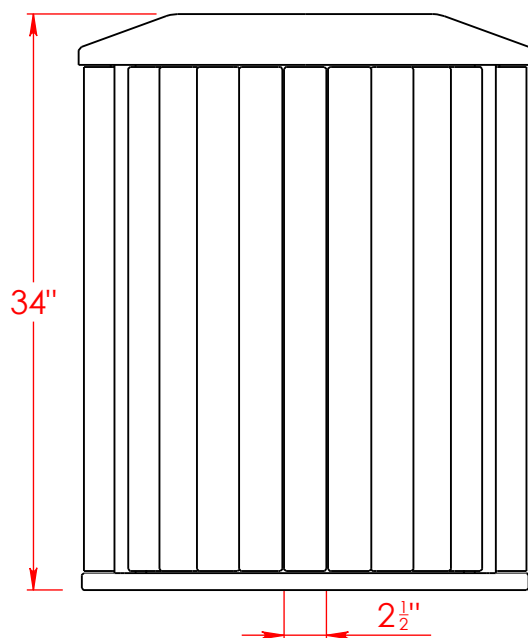
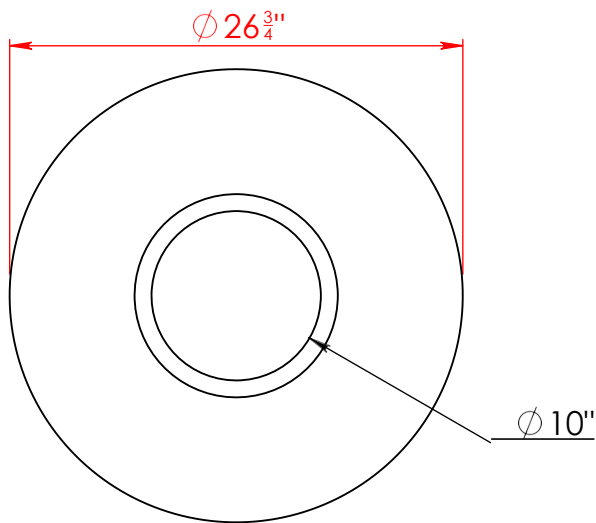
## **ELEMENT RADIUS BENCH**

- FULL BENCH IS COMPRISED OF (5) SECTIONS.
- TO BE ANCHORED SIDE BY SIDE TO FORM COMPLETE BENCH SHOWN BELOW.



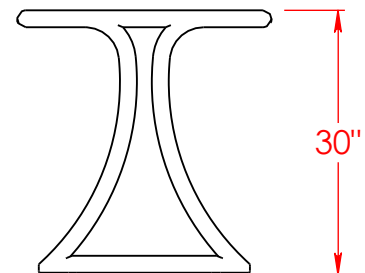
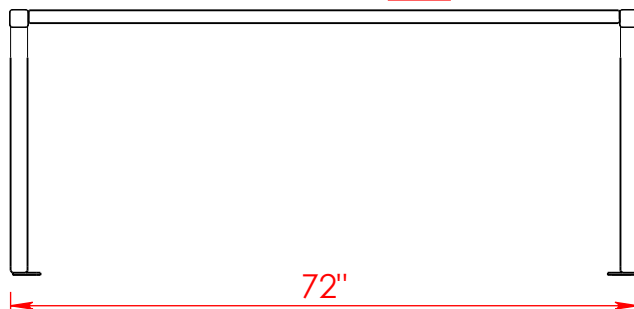
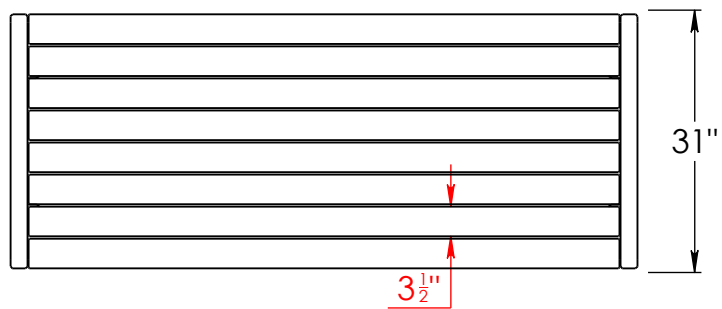
## **ELEMENT LITTER RECEPTACLE**

- STEEL CONSTRUCTION.
- SANDBLASTED, PRIMED & POWDER-COATED.
- 32. GAL. RIGID LINER INCLUDED.
- DETACHABLE ALUMINUM LID.
- S.S. ANCHOR TABS.
- RECYCLE RECEPTACLE WITH RECYCLE SYMBOL AVAILABLE.
- SYNTHETIC LUMBER SLATS – REQUIRES NO FINISH, OR REFINISHING.



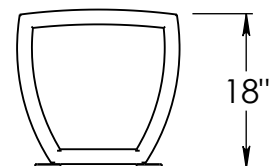
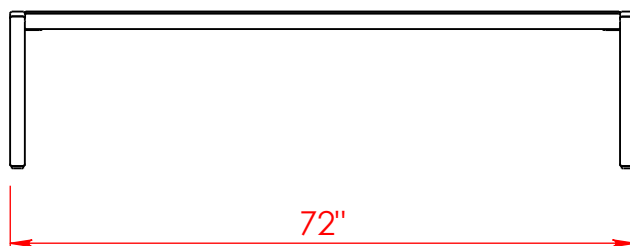
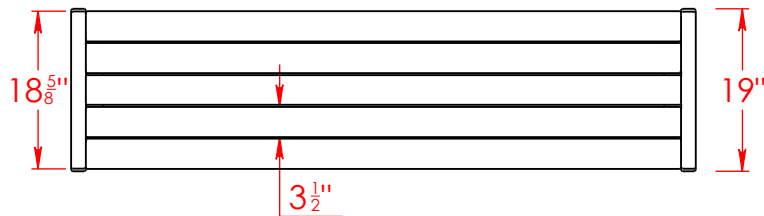
## **ELEMENT DINING TABLE**

- STEEL CONSTRUCTION.
- SANDBLASTED, PRIMED & POWDER-COAT FINISH.
- S.S. ANCHOR FEET.
- S.S. HARDWARE.
- SYNTHETIC LUMBER SLATS – REQUIRES NO FINISH, OR REFINISHING.



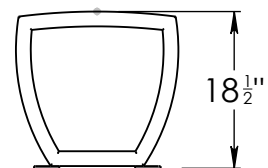
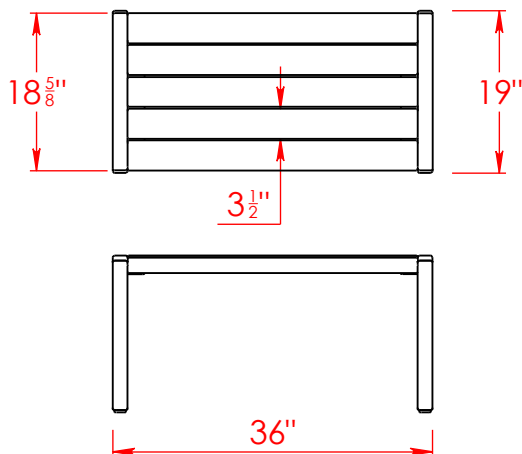
## **ELEMENT BACKLESS BENCH**

- STEEL CONSTRUCTION.
- SANDBLASTED, PRIMED & POWDER-COAT FINISH.
- S.S. ANCHOR FEET.
- S.S. HARDWARE.
- SYNTHETIC LUMBER SLATS – REQUIRES NO FINISH, OR REFINISHING.



## **ELEMENT ADA BACKLESS BENCH**

- STEEL CONSTRUCTION.
- SANDBLASTED, PRIMED & POWDER-COAT FINISH.
- S.S. ANCHOR FEET.
- S.S. HARDWARE.
- SYNTHETIC LUMBER SLATS – REQUIRES NO FINISH, OR REFINISHING.





- SPECIALTY -



### Mobile Dividers for Dining and Separation

Let's face it, the future of dining spaces is changing for good. Dividers for dining spaces are going to be a major part of the future, so we created a universal, designer friendly mobile divider that allows dining spaces to maximize occupancy while keeping patrons safe from the spread of COVID-19.

To keep things clean, we include an easy to remove acrylic panel in between two aluminum sheets. Simply slide the acrylic panel out, sanitize and re-insert.

#### **Materials:**

- Steel and Aluminum parts
- Casters with stops for mobility
- Acrylic panel slides out for easy sanitizing

#### **Options:**

- Choose your own pattern or use ours
- Powder coated to any color

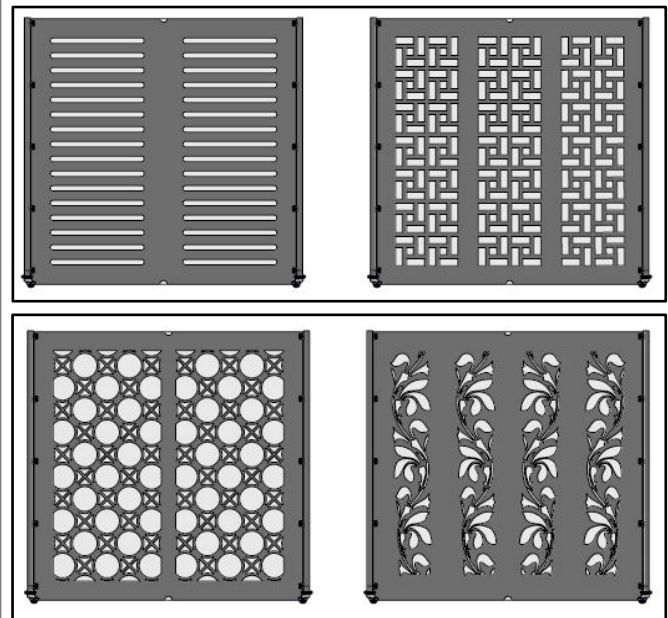
Contact DM Braun & Company for CAD Files and more information:

Phone: 949-295-0989

Email: [info@dmbraunco.com](mailto:info@dmbraunco.com)



### Patterns:



- SEATING -



### River Concrete Toppers

Our River Concrete Toppers are ideal for mounting on top new or already existing concrete walls. Customize them to whatever size you need and choose the wood type. These are designed with hidden hardware and hidden anchors for a clean, stylish finish. We make them with or without backs.

#### Materials:

- Jatoba, Ipe, Kebony, Thermory, Black Locust, recycled plastic lumber or whatever wood you desire
- Metal frame parts are stainless or galvanized steel. Arm rests can be stainless, powder coated, or galvanized steel.

#### Options:

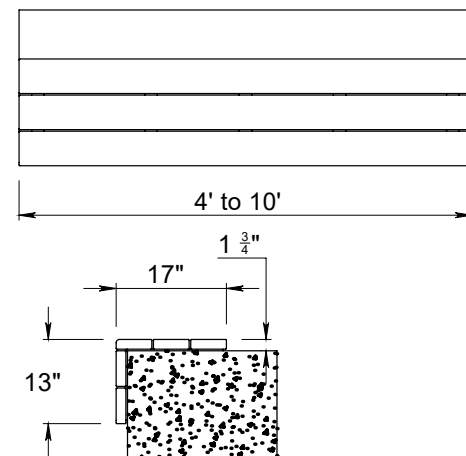
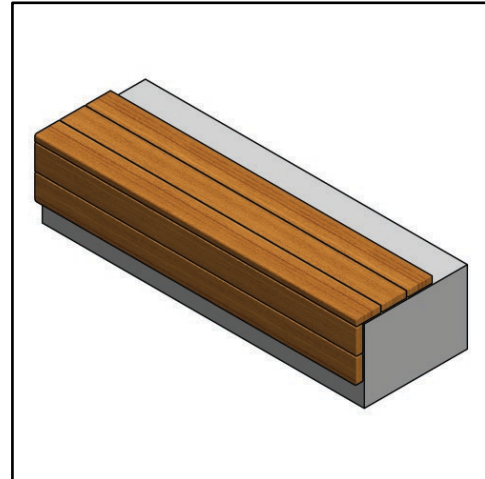
- Customize the size and material
- Choose color of finish on wood and on metal parts

Contact DM Braun & Company for CAD Files and more information:

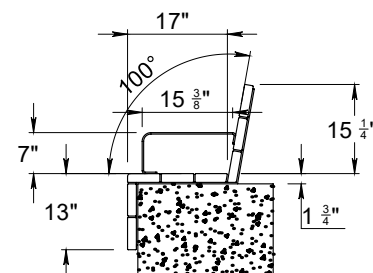
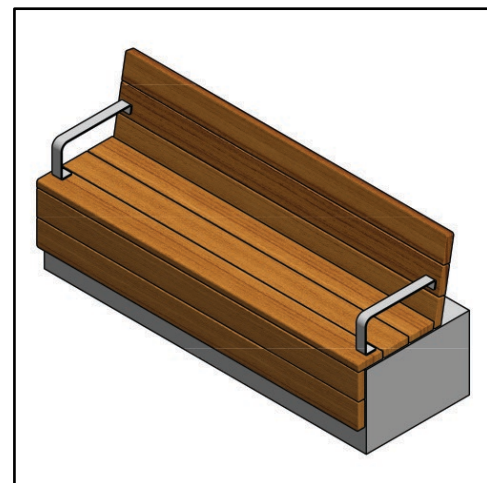
Phone: 949-295-0989

Email: [info@dmbraunco.com](mailto:info@dmbraunco.com)

### Backless – River Uno NB



### Backless – River Dos WB





### Mammoth Beam Benches

The Mammoth Series of products features large scale timbers to build massive site furniture. These beam benches can be customized to fit your needs. You choose the size, material, arm rests or no arm rests and leg height.

#### **Materials:**

- Wood Types: Reclaimed Redwood, Reclaimed Ironbark, \*Douglas Fir
  - \*Douglas Fir is treated with Borax to prevent rotting and bugs.
- Metal Legs & Arms: Typically Stainless Steel, Galvanized Steel or Powder Coated Steel.

#### **Options:**

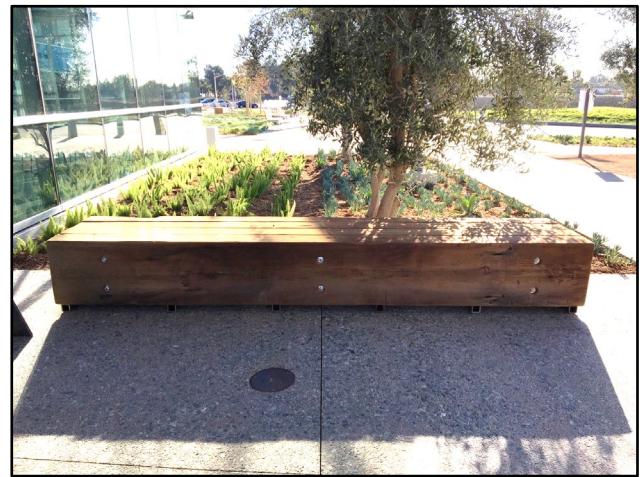
- Customize the size and material
- Choose color of finish on wood and on metal parts

Contact DM Braun & Company for CAD Files and more information:

Phone: 949-295-0989

Email: [info@dmbraunco.com](mailto:info@dmbraunco.com)

### Beam bench examples





**Hanover Series Bench**

The Hanover Series Bench is pure class. The back panel is laser cut from a single piece of metal and can have a custom pattern of your choice. The seat slats are clear kiln dried Jatoba hardwood. Feet accept ½" anchor bolts. Bolts not included.

**Materials:**

- Steel is standard, aluminum is an option
- Jatoba is standard for wood, or specify your own

**Additional Options:**

Custom logos, Memorial plaques

[Powder coat finish to match any RAL color: RAL Color Book](#)

Contact DM Braun & Company for CAD Files and more information:

Phone: 949-295-0989

Email: [info@dmbraunco.com](mailto:info@dmbraunco.com)

*(HN48-ST)- 4' Bench*  
*(HN72-ST)- 6' Bench*



Dimensions: 4' (HN48-ST): 47" x 22" x 34" high

Dimensions: 6' (HN72-ST): 69" x 22" x 34" high





**Hanover Backless Bench**

The Hanover Backless Bench has a heavy-duty steel frame with stainless steel anchor tabs. The seat detail pictured is made with Azek recycled plastic lumber, but this detail can be customized with any type of wood you'd like.

**Materials:**

- Steel with Wood or Plastic Lumber

**Options:**

- Powder coat finish to match any RAL color: RAL Color Book Or choose Duracoat finish for extra durability
- Choose materials and custom sizing

Contact DM Braun & Company for CAD Files and more information:

Phone: 949-295-0989

Email: [info@dmbraunco.com](mailto:info@dmbraunco.com)

**Hanover Backless Bench**



Dimensions: 72" x 17" x 18.5"





### San Antonio Curved Bench Seating System

The San Antonio Curved Bench Seating System is a very unique curved bench that works as a stand-alone item or you can combine numerous benches to create a unique seating arrangement on your site.

#### **Materials:**

- Steel with Wood, Steel with Plastic Lumber, or All Steel.

#### **Options:**

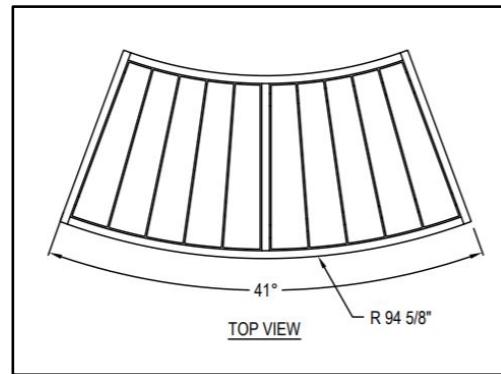
- Powder coat finish to match any RAL color: RAL Color Book Or choose Duracoat finish for extra durability
- Choose materials and custom arrangement

Contact DM Braun & Company for CAD Files and more information:

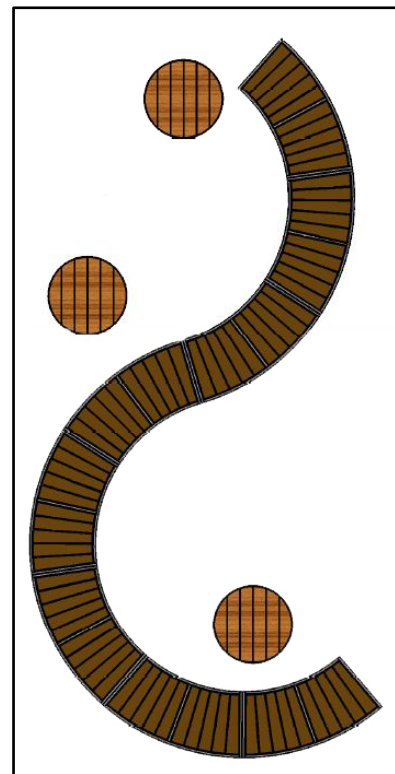
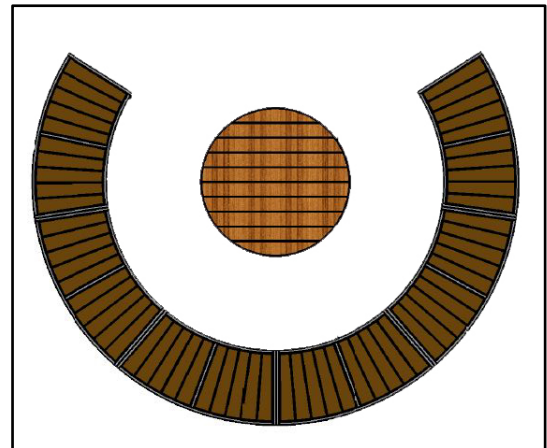
Phone: 949-295-0989

Email: [info@dmbraunco.com](mailto:info@dmbraunco.com)

### San Antonio Bench Seating System



Dimensions: 33-1/4" x 65-3/4" x 16-7/8"



\*Customize arrangement to make unique shapes on your site.





### Craft Collection Park Bench

Part of the well received Craft Collection, this bench brings a modern and sophisticated look to any site. This bench is heavy duty and has several customizable options. Choose wood+metal, all metal, plastic lumber+metal.

#### **Materials:**

- Steel+Wood, Full Metal, Plastic Lumber+Metal
- Stainless steel anchor feet

#### **Options:**

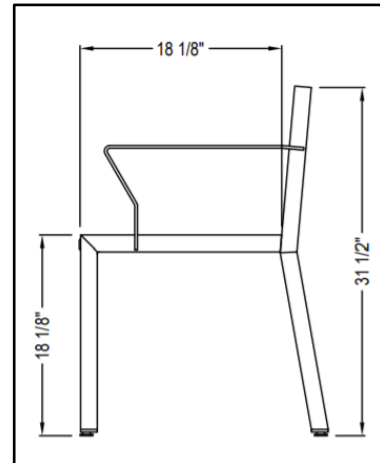
- Powder coat finish to match any RAL color: RAL Color Book Or choose Duracoat finish for extra durability
- You choose the materials, colors, and size

Contact DM Braun & Company for CAD Files and more information:

Phone: 949-295-0989

Email: [info@dmbraunco.com](mailto:info@dmbraunco.com)

### Craft Park Bench- Choose Materials



Dimensions: 6' or 4' is standard.





### **Craft Picnic Table**

Part of the well received Craft Collection, this picnic table really rounds out the collection. This picnic table is heavy duty and has several customizable options. Choose wood+metal, all metal, plastic lumber+metal.

#### **Materials:**

- Steel+Wood, Full Metal, Plastic Lumber+Metal
- Stainless steel anchor feet

#### **Options:**

- Powder coat finish to match any RAL color: RAL Color Book Or choose Duracoat finish for extra durability
- You choose the materials, colors, and size

Contact DM Braun & Company for CAD Files and more information:

Phone: 949-295-0989

Email: [info@dmbraunco.com](mailto:info@dmbraunco.com)

### **Craft Picnic Table- Choose Materials**



Dimensions: Client to decide, standard is 6'





### Avenue One Freestanding Series Benches

The Avenue One Freestanding Series of Benches are staples in the DM Braun line. These benches have steel bar ends and vertical straps. There are many different options and styles available for download below. The Avenue One series of benches are heavy duty and designed to withstand the elements.

#### Materials:

- Steel is standard, aluminum is an option
- Seat straps are 1 ½" x 5/16"
- End units are steel bar
- 1 5/16" support tubes at top and bottom

#### Additional Options:

Custom logos, Memorial plaques, Center armrest

[Powder coat finish to match any RAL color: RAL Color Book](#) Or choose Duracoat finish for extra durability

Contact DM Braun & Company for CAD Files and more information:

Phone: 949-295-0989

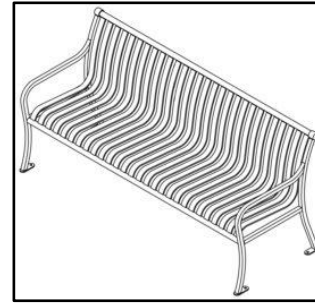
Email: [info@dmbraunco.com](mailto:info@dmbraunco.com)

#### **AVE-001- 6' Bench with Standard Arms**

Dimensions: 6' (AVE-001): 26" x 34" x 72"

#### **AVE-009- 8' Bench with Standard Arms**

Dimensions: 8' (AVE-009): 26" x 34" x 96"

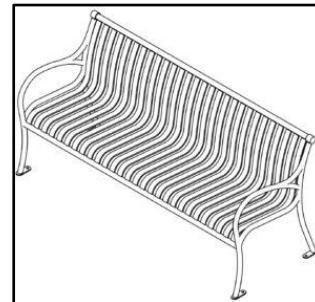


#### **AVE-004- 6' Bench with Rounded Arms**

Dimensions: 6' (AVE-004): 26" x 34" x 72"

#### **AVE-012- 8' Bench with Rounded Arms**

Dimensions: 8' (AVE-012): 26" x 34" x 96"

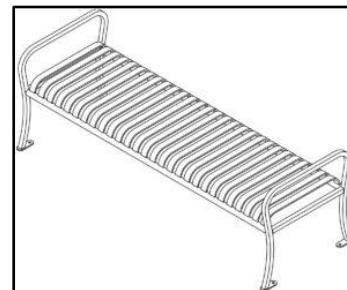


#### **AVE-005- 6' Backless Bench with Standard Arms**

Dimensions: 6' (AVE-005): 26" x 24" x 72"

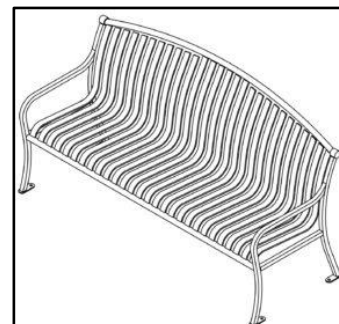
#### **AVE-013- 8' Backless Bench with Standard Arms**

Dimensions: 8' (AVE-013): 26" x 24" x 96"



#### **AVE-008- 6' Bench with Arched Back**

Dimensions: 6' (AVE-008): 28" x 38" x 72"





### Avenue One Mounted Series Benches

The Avenue One Mounted Series of Benches are staples in the DM Braun line. These benches are designed to be fixtures on your sites. There are many different options and styles available for download below. The Avenue One series of benches are heavy duty and designed to withstand the elements.

#### **Materials:**

- Steel is standard, aluminum is an option
- Seat straps are 1 ½" x 5/16"
- End units are steel bar
- 1 5/16" support tubes at top and bottom

#### **Additional Options:**

Custom logos, Memorial plaques, Center armrest

[Powder coat finish to match any RAL color; RAL Color Book Or choose Duracoat finish for extra durability](#)

Contact DM Braun & Company for CAD Files and more information:

Phone: 949-295-0989

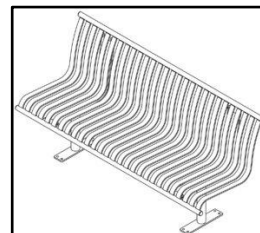
Email: [info@dmbraunco.com](mailto:info@dmbraunco.com)

#### **AVE-002- 6' Backed Surface Mounted Bench**

Dimensions: 6' (AVE-002): 26" x 34" x 72"

#### **AVE-010- 8' Backed Surface Mounted Bench**

Dimensions: 8' (AVE-010): 26" x 34" x 96"

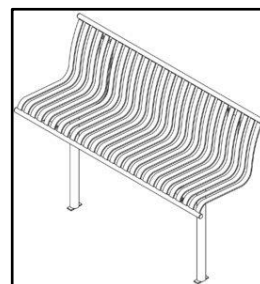


#### **AVE-003- 6' Backed In Ground Mounted Bench**

Dimensions: 6' (AVE-003): 26" x 34" x 72"

#### **AVE-011- 8' Backed In Ground Mounted Bench**

Dimensions: 8' (AVE-011): 26" x 34" x 96"

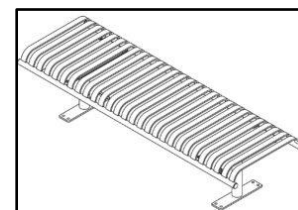


#### **AVE-006- 6' Backless Surface Mounted Bench**

Dimensions: 6' (AVE-006): 26" x 34" x 72"

#### **AVE-014- 8' Backless Surface Mounted Bench**

Dimensions: 8' (AVE-014): 26" x 34" x 96"

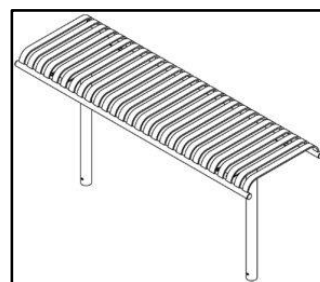


#### **AVE-007- 6' Backless In Ground Mounted Bench**

Dimensions: 6' (AVE-007): 26" x 34" x 72"

#### **AVE-015- 8' Backless In Ground Mounted Bench**

Dimensions: 8' (AVE-015): 26" x 34" x 96"





### Center Street Freestanding Series Benches

The Center Street Freestanding Series Benches are a step up from the Avenue One Series. The Center Street Series Benches have a horizontal strap seating surface which adds an additional touch of style and class to your site. There are many different options and styles available for download below.

#### **Materials:**

- Steel is standard, aluminum is an option.
- Seat straps are 1 ½" x 5/16"
- End units are steel bar
- 1 5/16" support tubes at top and bottom

#### **Additional Options:**

Custom logos, Memorial plaques, Center armrest

[Powder coat finish to match any RAL color; RAL Color Book Or choose Duracoat finish for extra durability](#)

Contact DM Braun & Company for CAD Files and more information:

Phone: 949-295-0989

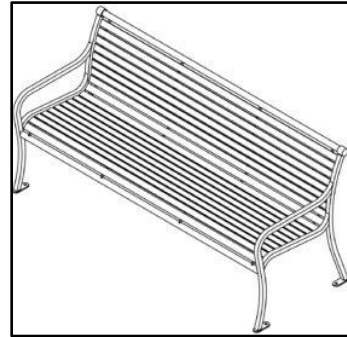
Email: [info@dmbraunco.com](mailto:info@dmbraunco.com)

#### **CS-001-6' Backed Standard Arm Bench**

Dimensions: 6' (CS-001): 26"x34"x72"

#### **CS-004- 8' Backed Standard Arm Bench**

Dimensions: 8' (CS-004): 26"x34"x96"

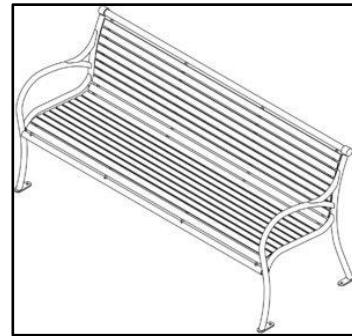


#### **CS-002- 6' Backed Rounded Arm Bench**

Dimensions: 6' (CS-002): 26"x34"x72"

#### **CS-005- 8' Backed Rounded Arm Bench**

Dimensions: 8' (CS-005): 26"x34"x96"

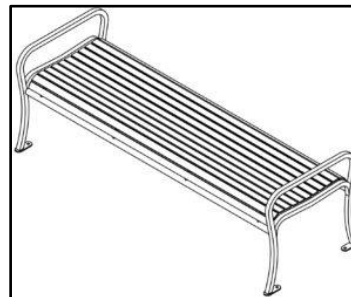


#### **CS-003- 6' Backless Mounted Bench**

Dimensions: 6' (CS-003): 26"x34"x72"

#### **CS-006- 8' Backless Mounted Bench**

Dimensions: 8' (CS-006): 26"x34"x96"





### Montecito Series Benches

The Montecito Series Benches are unique in the fact that they use round metal rods instead of flat straps on the seat and back. This is a heavy duty bench designed to last long and to hold up against nature's elements. There are many different options and styles available for download below.

#### **Materials:**

- Metal Rods are 5/8" o.d. solid
- End units are steel bar
- 1 5/16" support tubes at top and bottom
- Standard 6' and 8' lengths

#### **Additional Options:**

Custom logos, Memorial plaques, Center armrest

[Powder coat finish to match any RAL color: RAL Color Book Or choose Duracoat finish for extra durability](#)

Contact DM Braun & Company for CAD Files and more information:

Phone: 949-295-0989

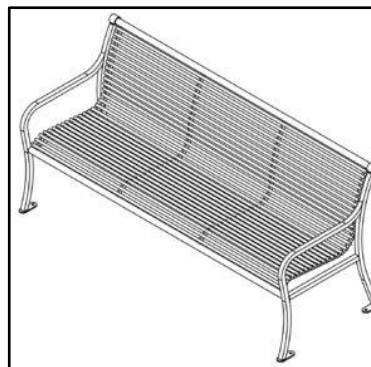
Email: [info@dmbraunco.com](mailto:info@dmbraunco.com)

#### **MC-001-6' Backed Standard Arm Bench**

Dimensions: 6' (CS-001): 26"x34"x72"

#### **MC-003- 8' Backed Standard Arm Bench**

Dimensions: 8' (CS-004): 26"x34"x96"

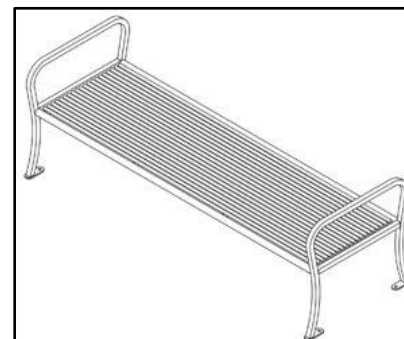


#### **MC-002- 6' Backless Bench**

Dimensions: 6' (CS-002): 26"x34"x72"

#### **MC-004- 8' Backless Bench**

Dimensions: 8' (CS-005): 26"x34"x96"





### Lakeshore Series Benches

The Lakeshore Series Benches are the perfect blend of metal and wood, delivering a unique look to your site . Lakeshore Benches can be specified to use Ipe hardwood or recycled plastic wood (polywood). There are many different options and styles available for download below.

#### **Materials:**

- Seat slats are offered in Ipe hardwood or Recycled Plastic lumber
- End units are steel bar
- 1 5/16" support tubes at top and bottom

#### **Additional Options:**

Custom logos, Memorial plaques, Center armrest

Powder coat finish to match any RAL color Or choose Duracoat finish for extra durability

Contact DM Braun & Company for CAD Files and more information:

Phone: 949-295-0989

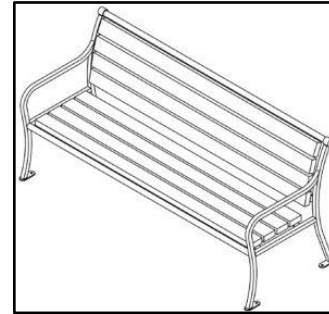
Email: [info@dmbraunco.com](mailto:info@dmbraunco.com)

#### **LS-001-6' Backed Standard Arm Bench**

Dimensions: 6' (LS-001): 26"x34"x72"

#### **LS-005- 8' Backed Standard Arm Bench**

Dimensions: 8' (LS-005): 26"x34"x96"

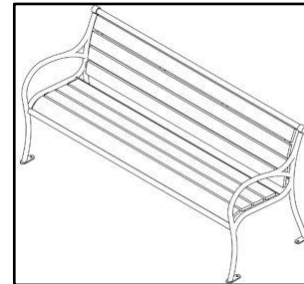


#### **LS-002- 6' Backed Rounded Arm Bench**

Dimensions: 6' (LS-002): 26"x34"x72"

#### **LS-006- 8' Backed Rounded Arm Bench**

Dimensions: 8' (LS-006): 26"x34"x96"

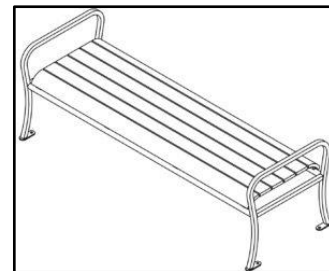


#### **LS-003- 6' Backless Bench**

Dimensions: 6' (LS-003): 26"x24"x72"

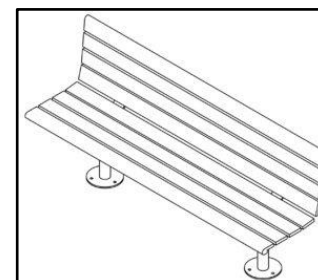
#### **LS-007- 8' Backless Bench**

Dimensions: 8' (LS-007): 26"x24"x96"



#### **LS-004- 6' Backed Mounted Bench**

Dimensions: 6' (LS-004): 26"x34"x72"





### **City Series Bench**

The City Series Bench is the most durable public space bench on the market. The seat and back are laser cut from a single piece of metal, eliminating the visible welds typical of competitive products. Ergonomic design for maximum comfort.

#### **Materials:**

- Steel is standard, aluminum is an option

#### **Additional Options:**

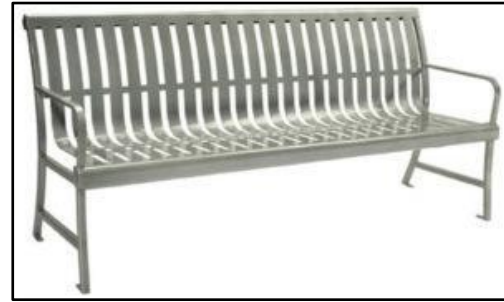
Custom logos, Memorial plaques

Powder coat finish to match any RAL color.  
Contact DM Braun & Company for CAD Files and more information:

Phone: 949-295-0989

Email: [info@dmbraunco.com](mailto:info@dmbraunco.com)

**(CY48-ST)- 4' Bench**  
**(CY72-ST)- 6' Bench**



Dimensions: 4' (CY48-ST): 49" x 26" x 34" high

Dimensions: 6' (CY72-ST): 73" x 26" x 34" high





### San Antonio Series Benches

The San Antonio Series of Benches are some of the most efficiently manufactured benches in the world. The seat and back panels are laser cut and can have a custom pattern. Black nylon glides are standard if your plan is to move this bench around. Anchor feet are an option. Designed by Urban Arena, San Diego & Costa Mesa, CA.

#### **Materials:**

- Steel is standard, aluminum is an option

#### **Additional Options:**

Custom logos, Memorial plaques

Powder coat finish to match any RAL color.

Contact DM Braun & Company for CAD Files and more information:

Phone: 949-295-0989

Email: [info@dmbraunco.com](mailto:info@dmbraunco.com)

**(SN45-ST)- 4' Backed Bench**  
**(SN72-ST)- 6' Backed Bench**



Dimensions: 4' (SN45-ST): 48" x 24" x 32" high  
 Dimensions: 6' (SN72-ST): 72" x 24" x 32" high

**(SNB48-ST)- 4' Backless Bench**  
**(SNB72-ST)- 6' Backless Bench**



Dimensions: 4' (SNB48-ST): 48" x 17" x 17" high  
 Dimensions: 6' (SNB72-ST): 72" x 17" x 17" high



- WOOD BENCHES -



### Signature Series Indoor/Outdoor Wood Benches

The Signature Series Backed Wood Benches are the epitome of quality. Our craftsmanship can't be beat. We use mortise and tenon construction at all structural points where most competitive products use screws.

#### Materials:

- Outdoor: Clear kiln dried Jatoba hardwood, or specify your own wood
- Indoor: Maple, or specify your own wood
- Finish: Penetrating sealer, or specify your own finish

#### Additional Options:

Memorial plaques, Center armrest, Custom sizes, Indoor or outdoor cushions

Contact DM Braun & Company for CAD Files and more information:

Phone: 949-295-0989

Email: [info@dmbraunco.com](mailto:info@dmbraunco.com)

#### **(CT48-JT-OF)- 4' Round Back Bench**

Dimensions: 4' (CT48-JT-OF): 48" X 24" X 36" high

#### **(CT60-JT-OF)- 5' Round Back Bench**

Dimensions: 5' (CT60-JT-OF): 60" X 24" X 36" high

#### **(CT72-JT-OF)- 6' Round Back Bench**

Dimensions: 6' (CT72-JT-OF): 72" X 24" X 36" high



#### **(SA48-JT-OF)- 4' Squared Back Bench**

Dimensions: 4' (SA48-JT-OF): 48" X 24" X 36" high

#### **(SA60-JT-OF)- 5' Squared Back Bench**

Dimensions: 5' (SA60-JT-OF): 60" X 24" X 36" high

#### **(SA72-JT-OF)- 6' Squared Back Bench**

Dimensions: 6' (SA72-JT-OF): 72" X 24" X 36" high



#### **(DV48-JT-OF)- 4' Squared Back Bench**

Dimensions: 4' (DV48-JT-OF): 48" X 19" X 19" high

#### **(DV60-JT-OF)- 5' Squared Back Bench**

Dimensions: 5' (DV60-JT-OF): 60" X 19" X 19" high

#### **(DV72-JT-OF)- 6' Squared Back Bench**

Dimensions: 6' (DV72-JT-OF): 72" X 19" X 19" high





**Premier Series Indoor/Outdoor Radial Wood Benches**

The Premier Series of Indoor/Outdoor Radial Wood Benches are unique and made custom for each client. We are one of the only manufacturers who can make these and our craftsmanship can't be beat. We use mortise and tenon construction at all structural points where most competitive products use screws.

**Materials:**

- Outdoor: Clear kiln dried Jatoba hardwood, or specify your own wood
- Indoor: Maple, or specify your own wood
- Finish: Penetrating sealer, or specify your own finish

**Additional Options:**

Memorial plaques, Center armrest, Custom sizes, Indoor or outdoor cushions

Contact DM Braun & Company for CAD Files and more information:

Phone: 949-295-0989

Email: [info@dmbraunco.com](mailto:info@dmbraunco.com)

**Full Circle Bench: 4 sizes to choose from, or customize for your project.**

- (OX80-JT-OF)- 3'
- (OX86-JT-OF)- 3.5'
- (OX92-JT-OF)- 4'
- (OX105-JT-OF)- 5'



**Half Circle Bench: Use our size or customize to fit your project.**

**(ST115-JT-OF)- Half Circle**



- LOVE SEATS -



### Monaco Lounge Furniture

It's without question that the Monaco Lounge Furniture collection is the most heavy-duty lounge furniture on the market. This furniture is made to withstand heavy use and abuse day in and day out.

#### **Materials:**

- Heavy duty steel frames
- Stainless steel anchor feet
- Fabric is Sunbrella Sling unless otherwise specified

#### **Options:**

- Powder coat finish to match any RAL color: RAL Color Book Or choose Duracoat finish for extra durability
- Client can customize size and fabric options

Contact DM Braun & Company for CAD Files and more information:

Phone: 949-295-0989

Email: [info@dmbraunco.com](mailto:info@dmbraunco.com)

### **Monaco Lounge Chair – 120lbs**



Dimensions: 31" x 31-1/4" x 31-3/8"

### **Monaco Love Seat – 200lbs**



Dimensions: 56" x 31-1/4" x 31-3/8"

### **Monaco Sofa- 280lbs**



Dimensions: 81" x 31-1/4" x 31-3/8"





**Fero Seating- 5' Loveseat**

The (FLS-5435) Fero Loveseat makes a statement on any site. The Fero series of products was designed to have a classy, upscale look and fits well at hotels, sky lofts or pool side at a personal residence. Customize the color pallet to create a unique look that's perfect for your property. Standard width is 5' but we can customize to your specifications.

**Measurements:**

58" W x 24" D x 30" H

**Materials:**

- Aluminum frame with powder coat finish
- Cushions use Sunbrella Sling fabric
- DryFast outdoor grade foam used in cushions

**Options (contact us):**

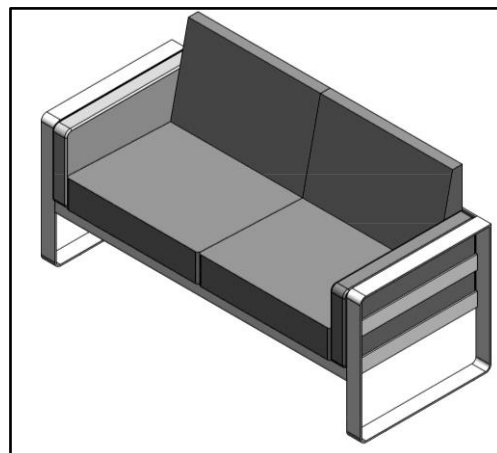
- Powder coat finish to match any RAL color.
- Choose any Sunbrella Sling fabric (or specify your own)

Contact DM Braun & Company for CAD Files and more information:

Phone: 949-295-0989

Email: [info@dmbraunco.com](mailto:info@dmbraunco.com)

**FLS-5435 Fero Loveseat**



Dimensions: 58" W x 24" D x 30" H





### Wicker Series – Love Seats

The Wicker Series of Love Seats are a commercial grade site seating solution designed to last. We custom engineered a thicker aluminum frame, hand picked a special brand of wicker, and only use fabric and foam designed for heavy use on our cushions.

#### Materials:

- Aluminum frame with powder coat finish
- Highest grade faux wicker
- Cushions use Sunbrella Sling fabric
- Dryfast outdoor grade foam used in cushions

#### Options:

- Powder coat finish to match any RAL color: RAL Color Book
- Choose any Sunbrella Sling fabric (or specify your own): Sunbrella Sling Options
- Choose your wicker color:

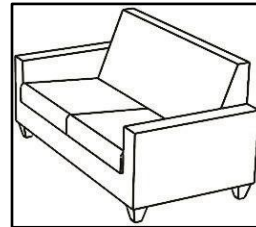


Contact DM Braun & Company for CAD Files and more information:

Phone: 949-295-0989

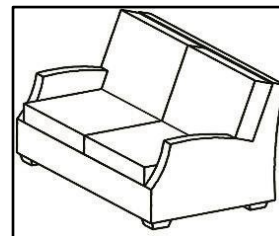
Email: [info@dmbraunco.com](mailto:info@dmbraunco.com)

#### (S10-LVT) – S10 Loveseat



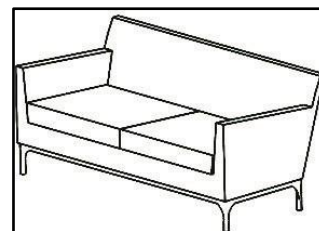
Dimensions: (S10-LVT): 59" x 31" x 32" high

#### (S20-LVL) – S20 Loveseat



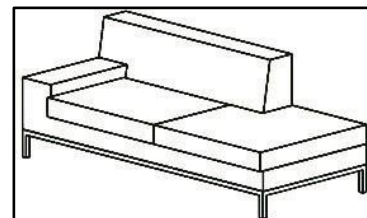
Dimensions: (S20-LVL): 59" x 35" x 34" high

#### (S40-022) – S40 Love Seat



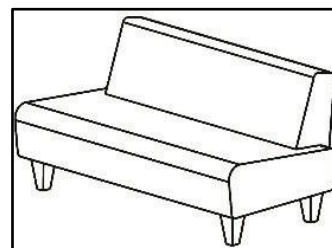
Dimensions: (S40-022): 53" x 30" x 29" high

#### (S50-203) – S50 Loveseat



Dimensions: (S50-203): 60" x 30" x 29" high

#### (S60-032) – S60 Loveseat



Dimensions: (S60-032): 60" x 30" x 28" high



- CHAIRS & BARSTOOLS -



### The Craft Collection – Dining Chair

The pieces in The Craft Collection were designed to have a simplistic, clean and modern look. All of the pieces in this collection can be customized for your site. You choose the materials, the colors, and the sizes to fit your site. We offer these items in a metal/wood combination, a metal/Comprewood (composite-recycled) combination, or in 100% steel or aluminum. When design and durability are important aspects for your site, choose The Craft Collection.

#### Materials:

- Aluminum frame with powder coat finish
- Choose wood seat and back, Comprewood seat and back, or all metal seat and back
- Exclusive Comprewood colors available

#### Options:

- Powder coat finish to match any RAL color: RAL Color Book
- Choose from our exclusive Comprewood colors

Contact DM Braun & Company for CAD Files and more information:

Phone: 949-295-0989

Email: [info@dmbraunco.com](mailto:info@dmbraunco.com)

#### (CRFT-001MTWD) – Craft Dining Chair – Metal + Wood



Dimensions: (CRFT-001MTWD): 18" X 18" X 31"

#### (CRFT-002MTCW) – Craft Dining Chair – Metal + Comprewood (composite-recycled)



Dimensions: (CRFT-002MTCW): 18" X 18" X 31"

#### (CRFT-003MT) – Craft Dining Chair – Metal



Dimensions(CRFT-003MT): 18" X 18" X 31"





### The Craft Collection – Barstools

The pieces in The Craft Collection were designed to have a simplistic, clean and modern look. All of the pieces in this collection can be customized for your site. You choose the materials, the colors, and the sizes to fit your site. We offer these items in a metal/wood combination, a metal/Comprewood (composite-recycled) combination, or in 100% steel or aluminum. When design and durability are important aspects for your site, choose The Craft Collection.

#### Materials:

- Steel or Aluminum frame with powder coat finish
- Choose wood seat and back, Comprewood seat and back, or all metal seat and back
- Exclusive Comprewood colors available

#### Options:

- Powder coat finish to match any RAL color: RAL Color Book
- Choose from our exclusive Comprewood colors

Contact DM Braun & Company for CAD Files and more information:

Phone: 949-295-0989

Email: [info@dmbraunco.com](mailto:info@dmbraunco.com)

#### (CRFT-010MTWD) – Craft Barstool– Metal + Wood



Dimensions: (CRFT-010MTWD): 18" x 24" x 43"

#### (CRFT-011MTCW) – Craft Barstool– Metal + Comprewood (composite-recycled)



Dimensions: (CRFT-011MTCW): 18" x 24" x 43"

#### (CRFT-012MT) – Craft Barstool– Metal



Dimensions(CRFT-012MT): 18" x 24" x 43"





### Wicker Series – Dining Chair

The Wicker Series of Dining Chairs are commercial grade site seating solutions designed to last. We custom engineered a thicker aluminum frame, hand picked a special brand of wicker, and only use fabric and foam designed for heavy use on our cushions.

#### **Materials:**

- Aluminum frame with powder coat finish
- Highest grade faux wicker

#### **Options:**

- Powder coat finish to match any RAL color: RAL Color Book
- Choose your wicker color:

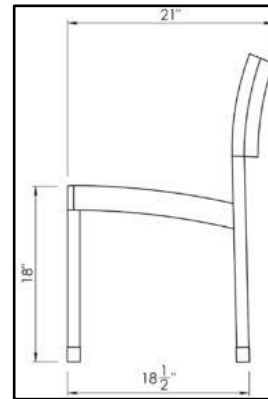


Contact DM Braun & Company for CAD Files and more information:

Phone: 949-295-0989

Email: [info@dmbraunco.com](mailto:info@dmbraunco.com)

#### **(DC1-21) – Wicker Series Dining Chair**



Dimensions: (S10-LGE): 17" W x 21" D x 32" H





**Monaco Series – Dining Chair**

The Monaco Series Chair is available in arm chair or side chair models. Ergonomic design for maximum comfort. Constructed of  $\frac{3}{4}$ " steel tubing with black nylon glides. The seat and back are laser cut from a single piece of metal, eliminating the visible welds typical of competitive products. Ergonomic design for maximum comfort.

**Materials:**

- Steel is standard, aluminum is an option

**Options:**

- Powder coat finish to match any RAL color: RAL Color Book
- Customize the back and seat pattern

Contact DM Braun & Company for CAD Files and more information:

Phone: 949-295-0989

Email: [info@dmbraunco.com](mailto:info@dmbraunco.com)

**(MCA-24)- Monaco Arm Chair**  
**(MCS-24)- Monaco Armless Chair**



Dimensions: (MCA-24): 24" x 23" x 34" high  
Dimensions: (MCS-24): 22" x 23" x 34" high





### Monaco Series – Barstool

The Monaco Series Barstool has an ergonomic design for maximum comfort. Constructed of  $\frac{3}{4}$ " steel tubing with black nylon glides. The seat and back are laser cut from a single piece of metal, eliminating the visible welds typical of competitive products.

**Materials:**

- Steel is standard, aluminum is an option

**Options:**

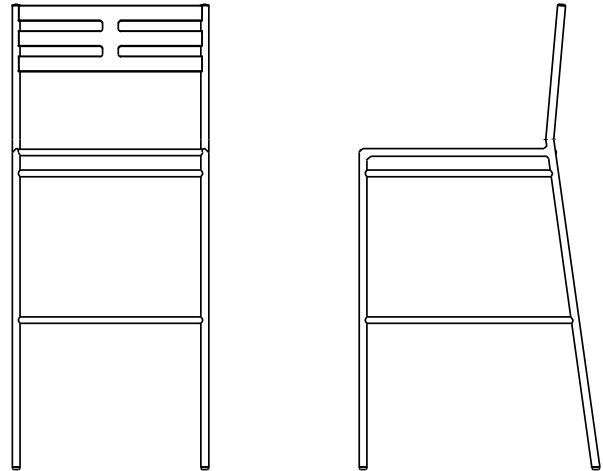
- Powder coat finish to match any RAL color
- Customize the back and seat pattern

Contact DM Braun & Company for CAD Files and more information:

Phone: 949-295-0989

Email: [info@dmbraunco.com](mailto:info@dmbraunco.com)

### (MCA-24-02)- Monaco Barstool



Dimensions: (MCA-24-02): 18" x 17" x 43" high



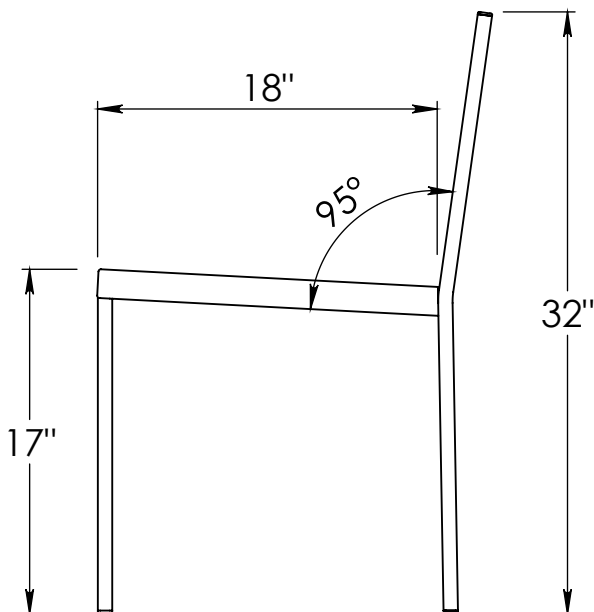
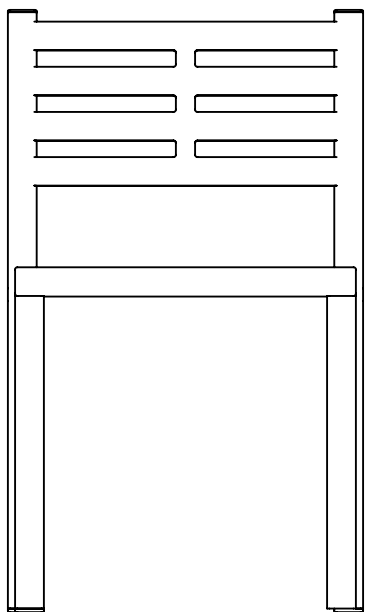
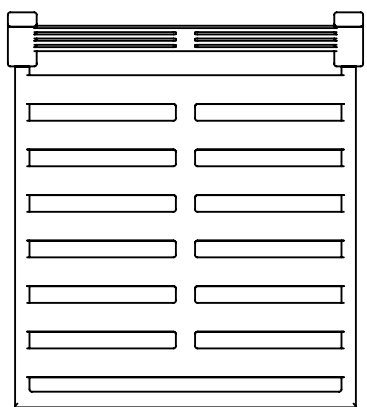


D M BRAUN

Quality Furniture for Public Spaces + Custom Designs

## SAN ANTONIO CHAIR

- STEEL CONSTRUCTION.
- SANDBLASTED, PRIMED & POWDER-COAT FINISH.
- BLACK NYLOND GLIDE CAPS.





### San Antonio Series – Barstool

The San Antonio Barstool is a durable and clean piece that goes well on any site. Constructed of square steel tubing for maximum durability. Black nylon glides are standard if your plan is to move these barstools around.

**Materials:**

- Steel is standard, aluminum is an option

**Additional Options:**

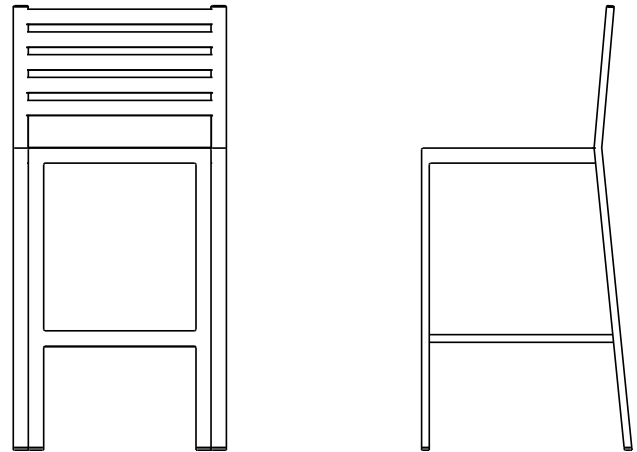
- Powder coat finish to match any RAL color.
- Add custom logo to seat or back

Contact DM Braun & Company for CAD Files and more information:

Phone: 949-295-0989

Email: [info@dmbraunco.com](mailto:info@dmbraunco.com)

**(SNB-ST-01)- San Antonio Barstool**



Dimensions: (SNB-ST-01): 21" x 17" x 43" high





### Wicker Seating-Lounge Chair

The S-Series of Lounge Chairs are a commercial grade site seating solution designed to last. We custom engineered a thicker aluminum frame, hand picked a special brand of wicker, and only use fabric and foam designed for heavy use on our cushions.

#### Materials:

- Aluminum frame with powder coat finish
- Highest grade faux wicker
- Cushions use Sunbrella Sling fabric
- Dryfast outdoor grade foam used in cushions

#### Options:

- Powder coat finish to match any RAL color: RAL Color Book
- Choose any Sunbrella Sling fabric (or specify your own): Sunbrella Sling Options
- Choose your wicker color:

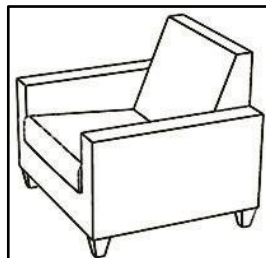


Contact DM Braun & Company for CAD Files and more information:

Phone: 949-295-0989

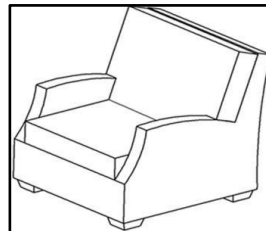
Email: [info@dmbraunco.com](mailto:info@dmbraunco.com)

#### (S10-LGE) – S10 Lounge Chair



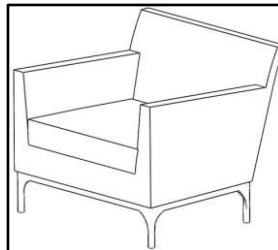
Dimensions: (S10-LGE): 34" W x 31" D x 32" H

#### (S20-LGO) – S20 Lounge Chair



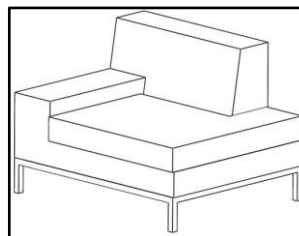
Dimensions: (S20-LGO): 33" x 35" x 34" high

#### (S40-011) – S40 Lounge Chair



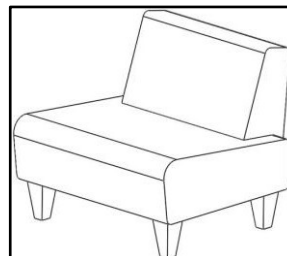
Dimensions: (S40-011): 30" x 30" x 29" high

#### (S50-100) – S50 Lounge Chair



Dimensions: (S50-100): 36w" x 30" x 29.5" high

#### (S60-016) – S60 Lounge Chair



Dimensions: (S40-011): 32" x 30" x 28" high





### Fero Seating- Lounge Chair

The (FLC-5464) Fero Lounge Chairs turn any site into an exciting and inviting one. The Fero series of products was designed to have a classy, upscale look and fits well at hotels, sky lofts or pool side at a personal residence. Customize the color pallet to create a unique look that's perfect for your property.

#### **Materials:**

- Aluminum frame with powder coat finish
- Cushions use Sunbrella Sling fabric
- Dryfast outdoor grade foam used in cushions

#### **Options:**

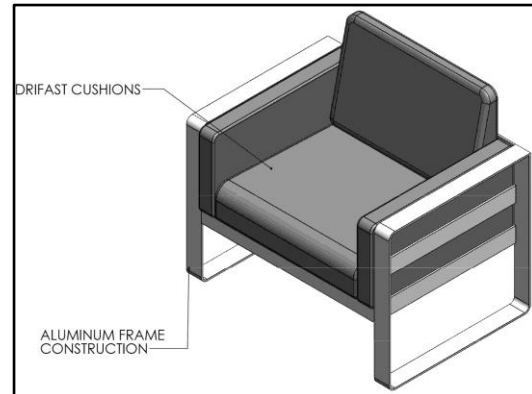
- Powder coat finish to match any RAL color: RAL Color Book
- Choose any Sunbrella Sling fabric (or specify your own): Sunbrella Sling Options

Contact DM Braun & Company for CAD Files and more information:

Phone: 949-295-0989

Email: [info@dmbraunco.com](mailto:info@dmbraunco.com)

### (FLC-5464) – Fero Lounge Chair



Dimensions: (FLC-5464): 34" W x 24" D x 30" H





### Monaco Lounge Furniture

It's without question that the Monaco Lounge Furniture collection is the most heavy-duty lounge furniture on the market. This furniture is made to withstand heavy use and abuse day in and day out.

#### **Materials:**

- Heavy duty steel frames
- Stainless steel anchor feet
- Fabric is Sunbrella Sling unless otherwise specified

#### **Options:**

- Powder coat finish to match any RAL color: RAL Color Book Or choose Duracoat finish for extra durability
- Client can customize size and fabric options

Contact DM Braun & Company for CAD Files and more information:

Phone: 949-295-0989

Email: [info@dmbraunco.com](mailto:info@dmbraunco.com)

### **Monaco Lounge Chair – 120lbs**



Dimensions: 31" x 31-1/4" x 31-3/8"

### **Monaco Love Seat – 200lbs**



Dimensions: 56" x 31-1/4" x 31-3/8"

### **Monaco Sofa- 280lbs**



Dimensions: 81" x 31-1/4" x 31-3/8"





**City Series Chair**

The City Series Chair is as durable as its City Bench counter part. The seat and back are laser cut from a single piece of metal, eliminating the visible welds typical of competitive products. Ergonomic design for maximum comfort.

**Materials:**

- Steel is standard, aluminum is an option

**Additional Options:**

Custom logos, Memorial plaques

[Powder coat finish to match any RAL color: RAL Color Book Or choose Duracoat finish for extra durability](#)

Contact DM Braun & Company for CAD Files and more information:

Phone: 949-295-0989

Email: [info@dmbraunco.com](mailto:info@dmbraunco.com)

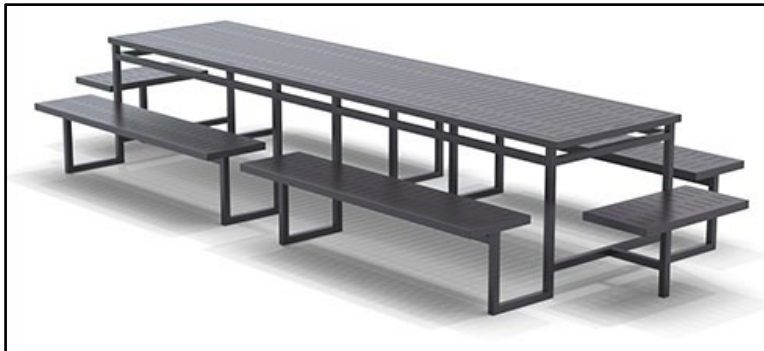
**(CA24-ST )- CityChair**



Dimensions: (CA24-ST): 25" x 26" x 34"high



- TABLES -



### San Antonio Picnic Table

The San Antonio Picnic Table is an entirely connected table and seating solution for sites that require no moving parts. This picnic table can be completely customized to accommodate size and design requirements.

#### **Materials:**

- Steel
- Stainless steel anchor feet

#### **Options:**

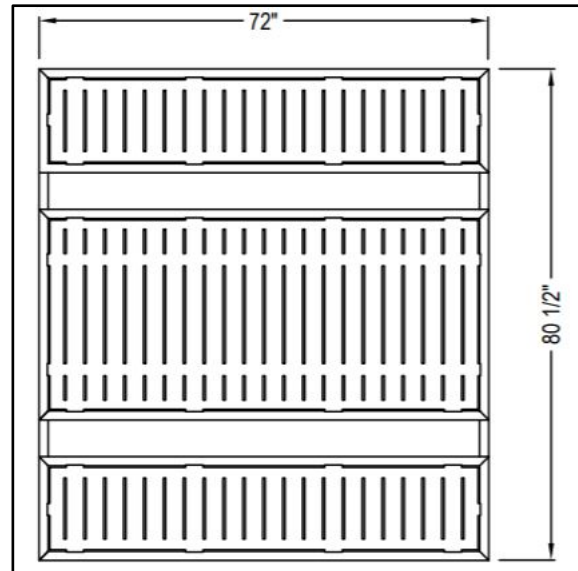
- Powder coat finish to match any RAL color: RAL Color Book Or choose Duracoat finish for extra durability
- Custom pattern or logo, custom sizes

Contact DM Braun & Company for CAD Files and more information:

Phone: 949-295-0989

Email: [info@dmbraunco.com](mailto:info@dmbraunco.com)

### **SA Picnic Table- Standard Size**



Dimensions: 72" x 80-1/2" x 30"

### **SA Picnic Table- Standard Square Size**



Dimensions: 42" x 42" x 30"





## River Picnic & Game Tables

The River Picnic and Game Tables are the best of the best when it comes to durability and style. A heavy duty steel frame supports the beautiful wood seats and tops. Game tables come with 2 game boards. Picnic tables have a raised dining platform.

### **Materials:**

- Jatoba, Ipe, Kebony, Thermory, Black Locust, recycled plastic lumber or whatever wood you desire
- Metal frame parts are powder coated steel

### **Options:**

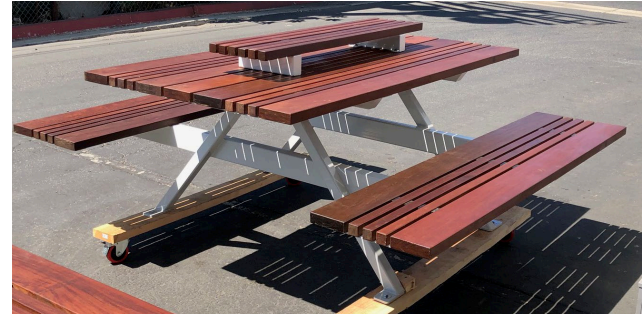
- Customize the size and material
- Choose color of finish on wood and on metal parts

Contact DM Braun & Company for CAD Files and more information:

Phone: 949-295-0989

Email: [info@dmbraunco.com](mailto:info@dmbraunco.com)

## ***River Picnic Table- Standard Size***



Dimensions: 72" standard length, custom options available

## ***River Game Table- Standard Size***



Dimensions: 48" standard length, custom options available. Custom game boards available





# DM BRAUN

Quality Furniture for Public Spaces + Custom Designs

23011 Alcalde Dr. Suite G

Laguna Hills, CA 92653

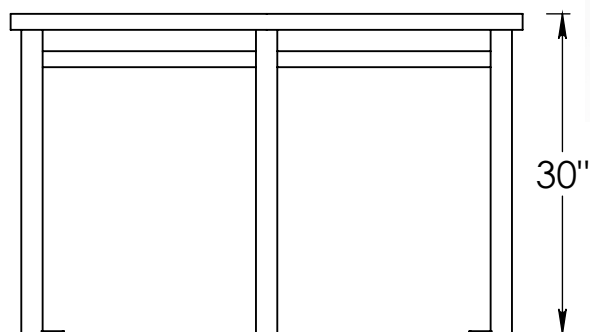
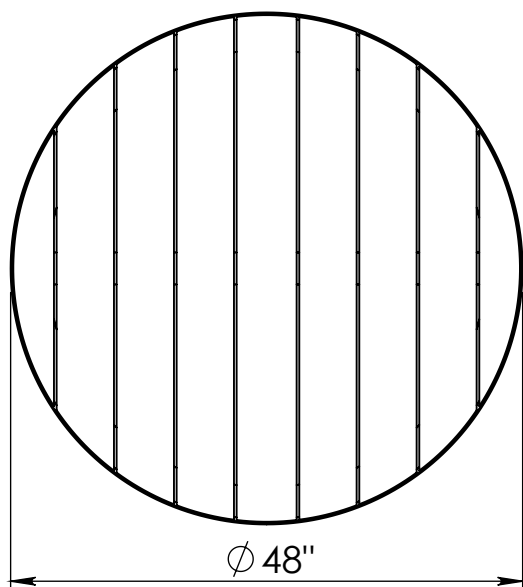
(714)-674-0855

info@dmbraunco.com

dmbraunco.com

## SAN ANTONIO - 48" DIA. DINING TABLE

- STEEL FRAME CONSTRUCTION.
- FRAME IS SANDBLASTED, PRIMED & POWDER-COATED. COLOR TBD.
- IPE WOOD TOP.
- IPE IS FINISHED WITH OUTDOOR PENETRATING SEALER.
- S.S. HARDWARE.
- S.S. ANCHORING TABS WITH 3/4" DIA. THRU HOLES. (ANCHORING HARDWARE BY OTHERS)



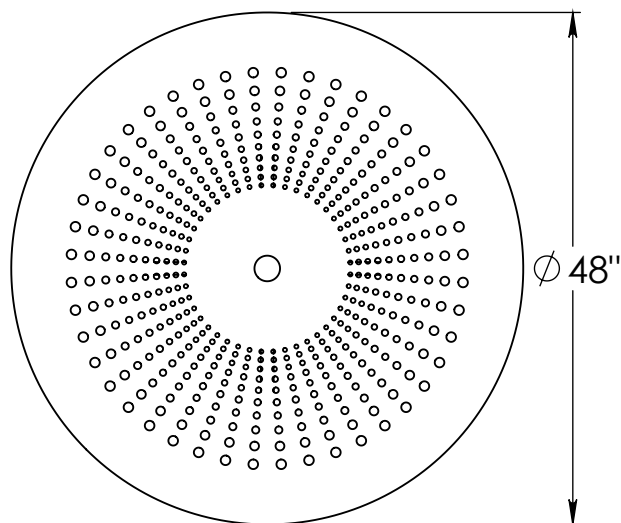
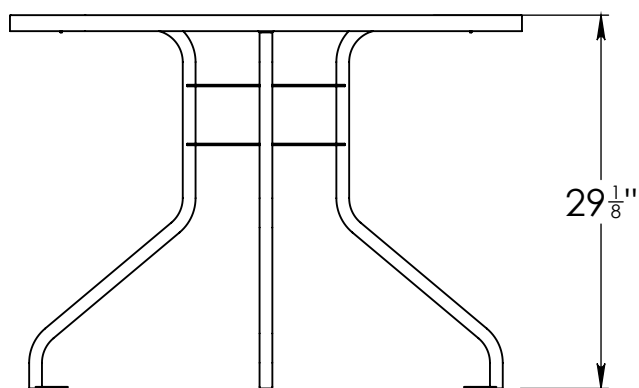


DM BRAUN

Quality Furniture for Public Spaces + Custom Designs

## SAN ANTONIO - 48" DIA. TABLE

- ALUMINUM TOP & STEEL FRAME CONSTRUCTION.
- SANDBLASTED, PRIMED & POWDER-COAT FINISH.
- ANCHORED OPTION AVAILABLE.
- CUSTOM LOGO OPTION AVAILABLE.
- BLACK NYLON GLIDES
- UMBRELLA HOLE OPTION AVAILABLE.





### **Craft Picnic Table**

Part of the well received Craft Collection, this picnic table really rounds out the collection. This picnic table is heavy duty and has several customizable options. Choose wood+metal, all metal, plastic lumber+metal.

#### **Materials:**

- Steel+Wood, Full Metal, Plastic Lumber+Metal
- Stainless steel anchor feet

#### **Options:**

- Powder coat finish to match any RAL color: RAL Color Book Or choose Duracoat finish for extra durability
- You choose the materials, colors, and size

Contact DM Braun & Company for CAD Files and more information:

Phone: 949-295-0989

Email: [info@dmbraunco.com](mailto:info@dmbraunco.com)

### **Craft Picnic Table- Choose Materials**



Dimensions: Client to decide, standard is 6'





### San Antonio Rail System

The San Antonio Rail System is a stand up/ bar stool dining solution for areas with limited space, or areas just looking for a contemporary dining solution. Size is completely customizable.

#### **Materials:**

- Steel or aluminum, steel is standard
- Stainless steel anchor feet

#### **Options:**

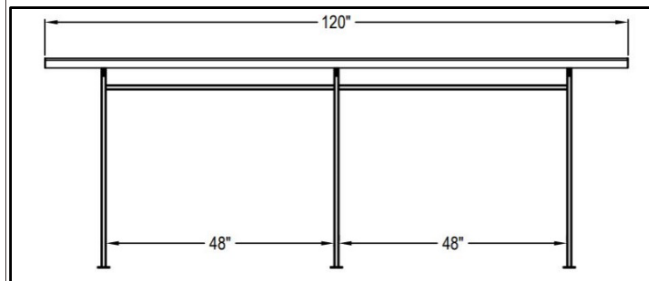
- Powder coat finish to match any RAL color: RAL Color Book Or choose Duracoat finish for extra durability
- You choose the size, or use ours

Contact DM Braun & Company for CAD Files and more information:

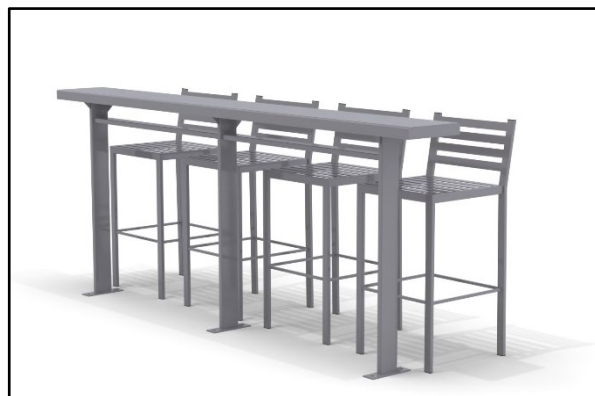
Phone: 949-295-0989

Email: [info@dmbraunco.com](mailto:info@dmbraunco.com)

### **San Antonio Rail System - Steel**



Dimensions: 120" x 20" x 43-1/4"



\*Add barstools to make this a seating/standing option.





### The Craft Collection – Square Dining Table

The pieces in The Craft Collection were designed to have a simplistic, clean and modern look. All of the pieces in this collection can be customized for your site. You choose the materials, the colors, and the sizes to fit your site. We offer these items in a metal/wood combination, a metal/Comprewood (composite-recycled) combination, or in 100% steel or aluminum. When design and durability are important aspects for your site, choose The Craft Collection.

#### Materials:

- Aluminum frame with powder coat finish
- Choose wood seat and back, Comprewood seat and back, or all metal seat and back
- Exclusive Comprewood colors available

#### Options:

- Powder coat finish to match any RAL color: RAL Color Book
- Choose from our exclusive Comprewood colors

Contact DM Braun & Company for CAD Files and more information:

Phone: 949-295-0989

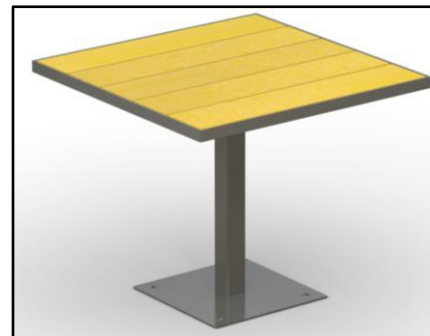
Email: [info@dmbraunco.com](mailto:info@dmbraunco.com)

#### (CRFT-004MTWD) – Craft Dining Table – Metal + Wood



Dimensions: (CRFT-004MTWD): 36" X 30" X 36"

#### (CRFT-005MTCW) – Craft Dining Table – Metal + Comprewood (composite-recycled)



Dimensions: (CRFT-005MTCW): 36" X 30" X 36"

#### (CRFT-006MT) – Craft Dining Table – Metal



Dimensions(CRFT-006MT): 36" X 30" X 36"





### The Craft Collection – Rectangle Dining Table

The pieces in The Craft Collection were designed to have a simplistic, clean and modern look. All of the pieces in this collection can be customized for your site. You choose the materials, the colors, and the sizes to fit your site. We offer these items in a metal/wood combination, a metal/Comprewood (composite-recycled) combination, or in 100% steel or aluminum. When design and durability are important aspects for your site, choose The Craft Collection.

#### Materials:

- Aluminum frame with powder coat finish
- Choose wood seat and back, Comprewood seat and back, or all metal seat and back
- Exclusive Comprewood colors available

#### Options:

- Powder coat finish to match any RAL color: RAL Color Book
- Choose from our exclusive Comprewood colors

Contact DM Braun & Company for CAD Files and more information:

Phone: 949-295-0989

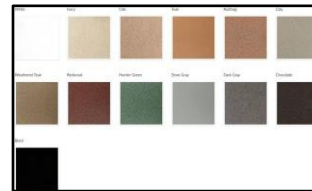
Email: [info@dmbraunco.com](mailto:info@dmbraunco.com)

#### (CRFT-007MTWD) – Craft Dining Table – Metal + Wood



Dimensions: (CRFT-007MTWD): 40" X 30" X 72"

#### (CRFT-008MTCW) – Craft Dining Table – Metal + Comprewood (composite-recycled)



Dimensions: (CRFT-008MTCW): 40" X 30" X 72"

#### (CRFT-009MT) – Craft Dining Table – Metal



Dimensions(CRFT-009MT): 40" X 30" X 72"





### **San Antonio Series Tables – Side Table**

The San Antonio Series of tables are unique in that the top is laser cut from one single sheet of metal. We can cut in any pattern you want, or we can add a logo for your site.

**Materials:**

- Steel is standard, aluminum is an option

**Additional Options:**

Customize to your size.

Painting to match any color is also an option

Contact DM Braun & Company for CAD Files and more information:

Phone: 949-295-0989

Email: [info@dmbraunco.com](mailto:info@dmbraunco.com)

### **SNE24-ST- 24" San Antonio Side Table**



Dimensions: (SNE24-ST): 24" x 24" x24"





### **TRS Series Tables – Side Table**

The TRS Series of tables are made standard in Aluminum making them light weight and durable. These tables can finish a site nicely with a pop of color to match other site accents or can be made to blend in.

#### ***Materials:***

- Aluminum is standard, steel is an option

#### ***Additional Options:***

Customize to your size.

Powder coat finish to match any RAL color: RAL Color Book

Contact DM Braun & Company for CAD Files and more information:

Phone: 949-295-0989

Email: [info@dmbraunco.com](mailto:info@dmbraunco.com)

### ***TRS 2424- 24" TRS Side Table***



Dimensions: (TRS-2424): 24" x 24" x18"





**Wicker Series – Side Table**

The Wicker Series of Tables feature premium polymer all weather rattan. Aluminum frame. Aluminum table top insert is standard, or you may select a granite top of your choice (minimum order six tables) at extra cost.

**Materials:**

- All weather rattan
- Granite or aluminum top

**Additional Options:**

Customize to match your site plans

Contact DM Braun & Company for CAD Files and more information:

Phone: 949-295-0989

Email: [info@dmbraunco.com](mailto:info@dmbraunco.com)

**T3-2424- Wicker Series End Table**



Dimensions: (T3-2424): 24" x 24" x 20" high



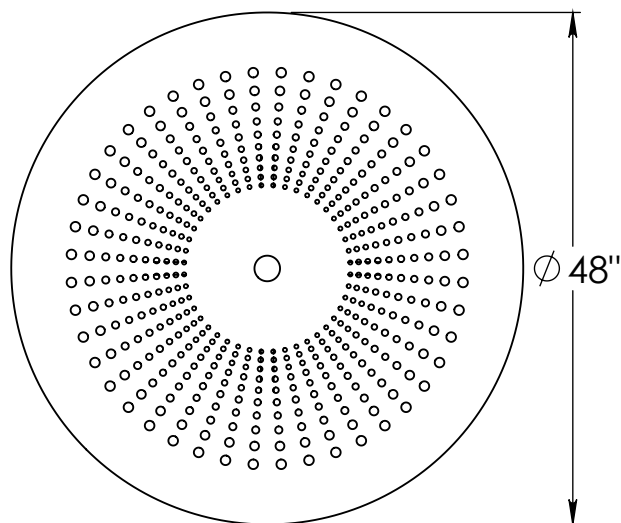
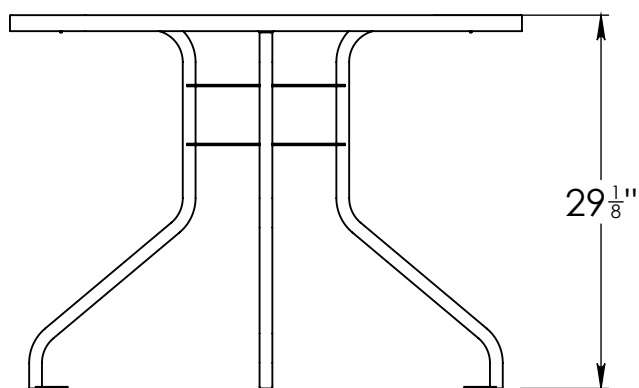


DM BRAUN

Quality Furniture for Public Spaces + Custom Designs

## SAN ANTONIO - 48" DIA. TABLE

- ALUMINUM TOP & STEEL FRAME CONSTRUCTION.
- SANDBLASTED, PRIMED & POWDER-COAT FINISH.
- ANCHORED OPTION AVAILABLE.
- CUSTOM LOGO OPTION AVAILABLE.
- BLACK NYLON GLIDES
- UMBRELLA HOLE OPTION AVAILABLE.





### City Series – Dining Table

The City Series Dining Table is a high performance, durable site solution. The top is laser cut and can have a custom pattern at minimal extra cost. Feet accept ½" anchor bolts. Bolts not included.

**Materials:**

- Steel is standard, aluminum is an option.

**Additional Options:**

Custom logos, Customize to your size.

[Powder coat finish to match any RAL color; RAL Color Book](#)

Contact DM Braun & Company for CAD Files and more information:

Phone: 949-295-0989

Email: [info@dmbraunco.com](mailto:info@dmbraunco.com)

### CDT48-ST- 48" City Series Dining Table



Dimensions: (CDT48-ST): 48"Dia x 30"High





### San Antonio Series Tables – Dining Table

The San Antonio Series of tables are unique in that the top is laser cut from one single sheet of metal. We can cut in any pattern you want, or we can add a logo for your site.

#### **Materials:**

- Steel is standard, aluminum is an option

#### **Additional Options:**

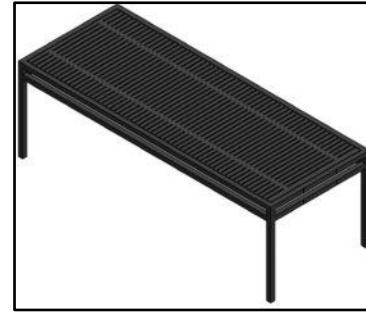
Custom logos, Customize to your size.  
Powder coat finish to match any RAL color

Contact DM Braun & Company for CAD Files and more information:

Phone: 949-295-0989

Email: [info@dmbraunco.com](mailto:info@dmbraunco.com)

### **SNT72-ST- 72" San Antonio Dining Table**



Dimensions: (SNT72-ST): 72" x 33" x30"





# DM BRAUN

Quality Furniture for Public Spaces + Custom Designs

23011 Alcalde Dr. Suite G

Laguna Hills, CA 92653

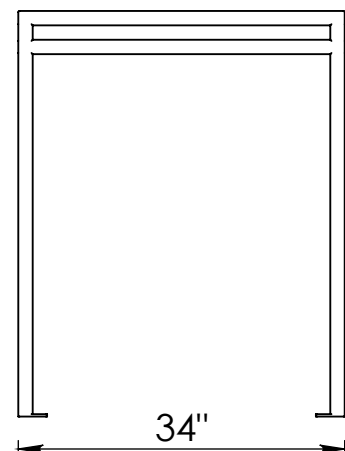
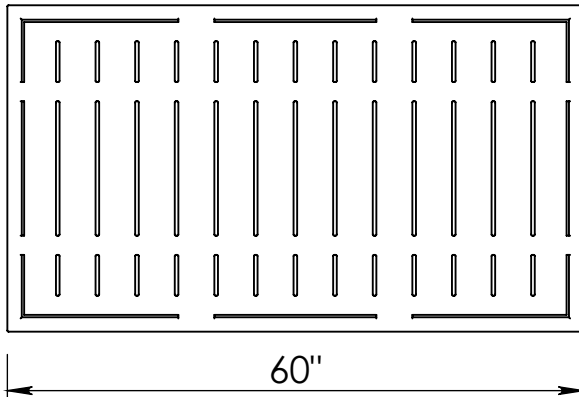
(714)-674-0855

info@dmbraunco.com

dmbraunco.com

## SAN ANTONIO BAR HEIGHT TABLE

- STEEL CONSTRUCTION.
- STEEL FRAME IS SANDBLASTED, PRIMED & POWDER-COATED. COLOR TBD.
- S.S. ANCHOR TABS WITH 1/2" DIA. THRU HOLES, ANCHORS NOT INCLUDED.



- LITTER RECEPTACLE -



# DM BRAUN

Quality Furniture for Public Spaces + Custom Designs

23011 Alcalde Dr. Suite G

Laguna Hills, CA 92653

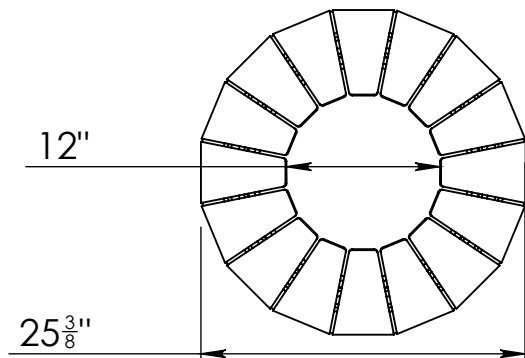
(714)-674-0855

info@dmbranco.com

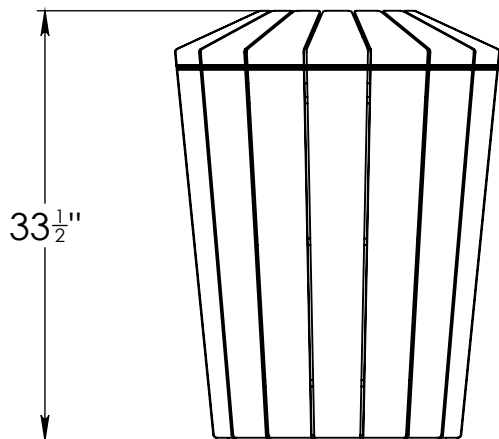
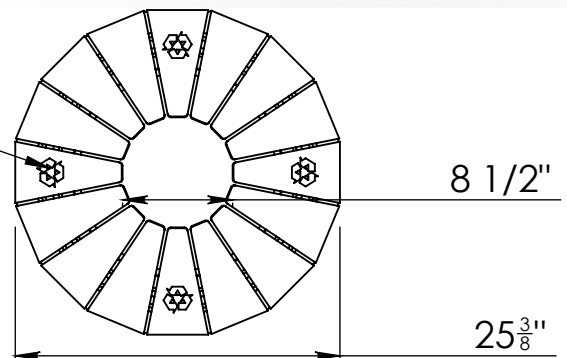
dmbranco.com

## CUSTOM RECEPTACLE

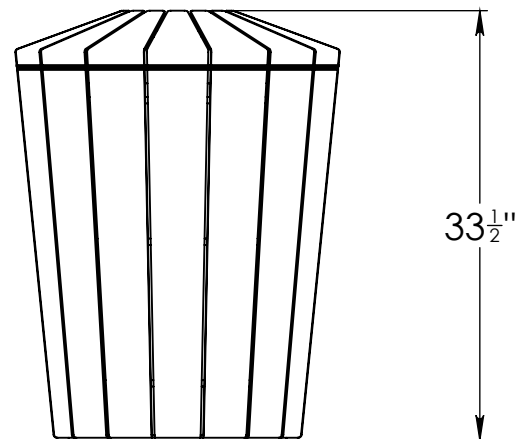
- STEEL CONSTRUCTION.
- SANDBLASTED, PRIMED & POWDER-COAT FINISH.
- 25 gal. RIGID LINER INCLUDED.
- S.S. HING ON TOP LID.
- S.S. ANCHORING PLATE, ANCHORING HARDWARE NOT INCLUDED.
- RECYCLE RECEPTACLE WITH RECYCLE SYMBOL AVAILABLE.
- CUSTOM LOGO OPTION AVAILABLE.



OUTDOOR WHITE VINYL  
DECAL



LITTER RECEPTACLE



RECYCLE RECEPTACLE



### Monaco Series Litter Receptacles

A clean and fresh look is what you get when you put the Monaco litter/recycle receptacles on your site. With the Monaco litter/recycle receptacles, you get a completely hidden anchoring system, locking lid, and full stainless-steel construction.

#### **Materials:**

- Stainless Steel
- 32 Gallon Rigid Plastic Liner
- Hidden Anchoring System
- Custom lettering

#### **Options:**

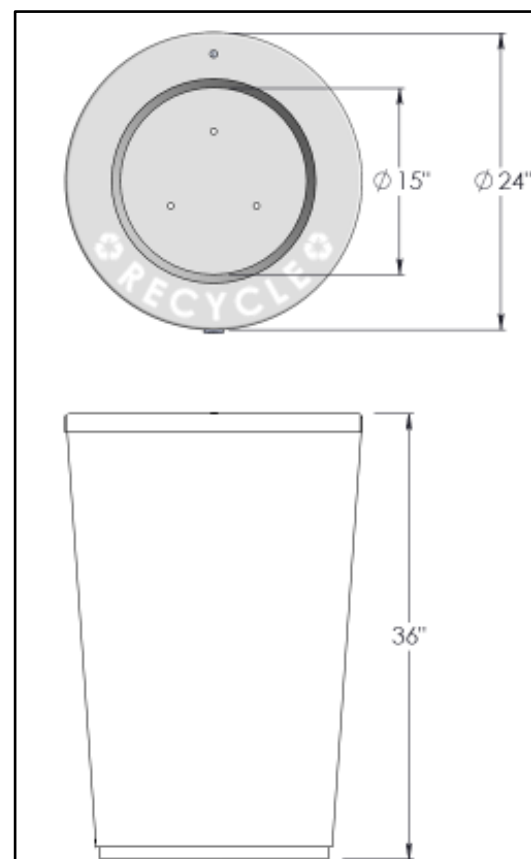
- Powder coat finish to match any specified color

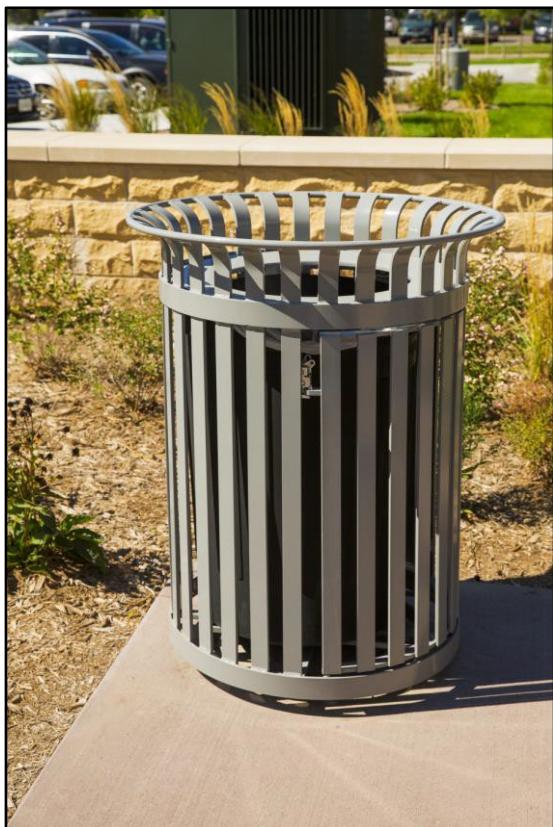
Contact DM Braun & Company for Dimensions, CAD Files and more information:

Phone: 949-295-0989

Email: [info@dmbraunco.com](mailto:info@dmbraunco.com)

### MNCO-01 Litter/Recycle Receptacle





### **Avenue One Series Litter Receptacles**

The Avenue One Series of Litter Receptacles are staples in the DM Braun line. These litter receptacles are designed for high traffic areas. There are many different options and styles available for download below. The Avenue One series of Litter Receptacles are heavy duty and designed to withstand the elements.

#### **Materials:**

- Vertical straps – 5/16" x 1 1/2" steel flat bar
- Outside support strap – 1/4" x 2" steel flat bar
- Top ring – 5/8" dia. solid steel round bar
- Foot plates – 5/16" x 1 1/2" stainless steel
- Lid – 14 ga. spun steel lid
- Dome – 12 ga. spun steel dome
- Ash inlay – 13 ga. stainless steel ash pan
- Liner – 2x High Density Polyethylene liner with handles

#### **Options:**

- Powder coat finish to match any RAL color: RAL Color Book Or choose Duracoat finish for extra durability

Contact DM Braun & Company for Dimensions, CAD Files and more information:

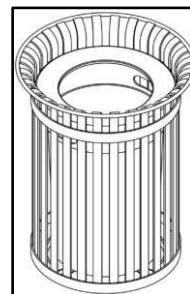
Phone: 949-295-0989

Email: [info@dmbraunco.com](mailto:info@dmbraunco.com)

**AVE-LR001-FL- Round 40 Gallon Receptacle – Flat Lid**

**AVE-LR002-FL- Round 36 Gallon Receptacle – Flat Lid**

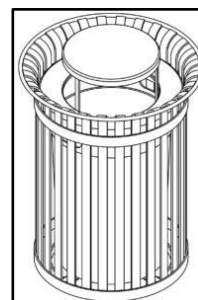
**AVE-LR003-FL- Round 32 Gallon Receptacle – Flat Lid**



**AVE-LR001-DL- Round 40 Gallon Receptacle – Dome Lid**

**AVE-LR002-DL- Round 36 Gallon Receptacle – Dome Lid**

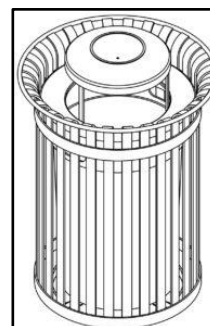
**AVE-LR003-DL- Round 32 Gallon Receptacle – Dome Lid**



**AVE-LR001-DLAI- Round 40 Gallon Receptacle – Dome Lid W/ Ash Inlay**

**AVE-LR002-DLAI- Round 36 Gallon Receptacle – Dome Lid W/ Ash Inlay**

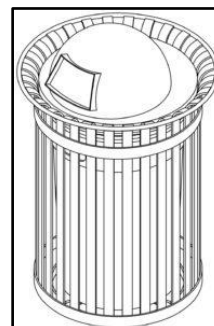
**AVE-LR003-DLAI- Round 32 Gallon Receptacle – Dome Lid W/ Ash Inlay**



**AVE-LR001-DLFE- Round 40 Gallon Receptacle – Dome Lid W/ Ash Inlay**

**AVE-LR002-DLFE- Round 36 Gallon Receptacle – Dome Lid W/ Ash Inlay**

**AVE-LR003-DLFE- Round 32 Gallon Receptacle – Dome Lid W/ Ash Inlay**





### City Series Litter Receptacles

The City Series of Litter Receptacles are unique in that the entire body is laser cut from a single piece of metal, eliminating the visible welds typical of most products. Custom laser cut patterns are an option as well. Aluminum lid lifts out for service. 32 Gal. black rigid liner is included. Hidden feet accept  $\frac{1}{2}$ " anchor bolts. Bolts not included. For straight sided option see below.

#### Materials:

- Steel is standard aluminum is an option
- Lid is steel or aluminum
- Liner – 2x High Density Polyethylene liner with handles

#### Options:

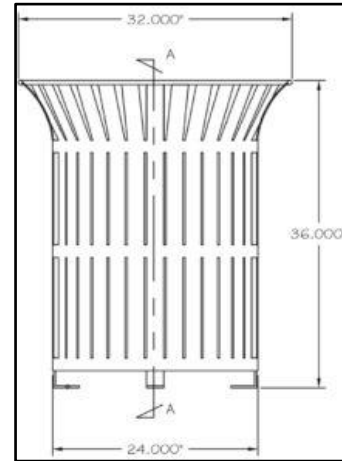
- Powder coat finish to match any RAL color: RAL Color Book Or choose Duracoat finish for extra durability
- Custom pattern or logo, custom size, custom shape

Contact DM Braun & Company for CAD Files and more information:

Phone: 949-295-0989

Email: [info@dmbraunco.com](mailto:info@dmbraunco.com)

### CLR32-ST- Round 32 Gallon – Flat Lid



Dimensions: CLR32-ST: 32" X 36"

### CLX24-ST- Round 32 Gallon- Straight Sided Option (No Flair)



Dimensions: CLR32-ST: 24" X 36"





### San Antonio Litter Receptacle

The San Antonio Litter Receptacle has a clean look with solid construction. This litter receptacle can have custom logos or patterns laser cut into all four sides. The top rail ensures litter gets inside instead of falling over the edge.

#### **Materials:**

- Steel is standard aluminum is an option
- Lid is steel
- Liner – 2x High Density Polyethylene liner with handles

#### **Options:**

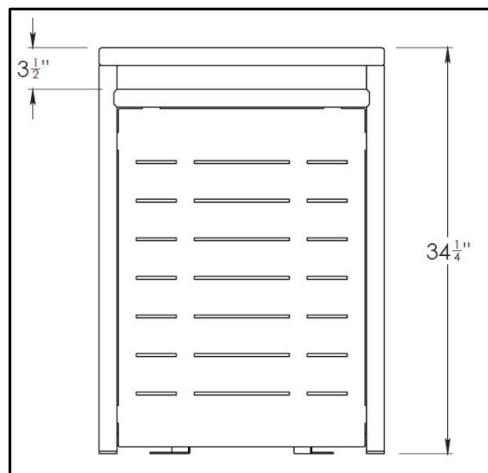
- Powder coat finish to match any RAL color: RAL Color Book Or choose Duracoat finish for extra durability
- Custom pattern or logo, custom sizes

Contact DM Braun & Company for CAD Files and more information:

Phone: 949-295-0989

Email: [info@dmbraunco.com](mailto:info@dmbraunco.com)

#### **SA Litter- Square 32 Gallon – Flat Lid**



Dimensions: CLR32-ST: 24" X 34-1/4"



- ASH URNS -



### City Series Ash Urn

The City Series Ash Urn are unique in that the entire body is laser cut from a single piece of metal, eliminating the visible welds typical of most products. Custom laser cut patterns are an option as well.

#### **Materials:**

- Steel is standard aluminum is an option

#### **Options:**

- Powder coat finish to match any RAL color:
- Custom pattern or logo, custom size, custom shape

Contact DM Braun & Company for CAD Files and more information:

Phone: 949-295-0989

Email: [info@dmbraunco.com](mailto:info@dmbraunco.com)

### CAU12-ST- City Ash Urn



Dimensions: CAU12-12: 12" diameter x 24" height"





### **Avenue One Series Ash Urn**

The Avenue One Series Ash Urn is an essential for any site where smoking may be prevalent. Matches with the Avenue One Series of Benches and Litter Receptacles

**Materials:**

- Vertical straps – 1/4" x 1 1/2" steel flat bar
- Top ring – 5/8" dia. solid steel round bar
- Support ring – 1/4" x 2" steel flat bar
- Support Bars – 1/2" x 1" Steel flat bar
- Foot plates – 5/16" x 1 1/2" stainless steel
- Ash inlay – 13 ga. stainless steel ash pan

**Options:**

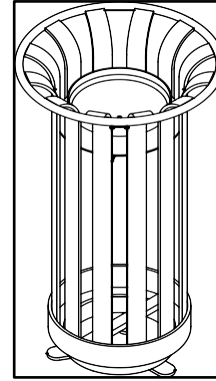
- Powder coat finish to match any RAL color:

Contact DM Braun & Company for CAD Files and more information:

Phone: 949-295-0989

Email: [info@dmbraunco.com](mailto:info@dmbraunco.com)

### **AVE001-AU Avenue One Ash Urn**



Dimensions: AVE001-AU: 16" x 27"



- BICYCLE RACKS -



### Avenue One Series – Bicycle Rack

The Avenue One Series of Bicycle Racks are staples in the DM Braun line. These bicycle racks are designed to be universal and to work on any site. Customize to the length that you'd like or choose one of our sizes. There are many different options and styles available for download below. The Avenue One series of Bicycle Racks are heavy duty and designed to withstand the elements.

#### **Materials:**

- Tubing – 2 3/8" dia. schedule 40 steel tubing
- Foot Plates – 7 1/2" dia. x 1/4" stainless steel

#### **Additional Options:**

Choose five, seven, nine, eleven or thirteen capacity; embedded or surface mount. Powder coat finish to match any RAL color, or choose Duracoat finish for extra durability.

Additional options are galvanized or stainless steel finish.

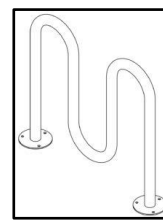
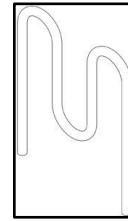
Contact DM Braun & Company for Dimensions, CAD Files and more information:

Phone: 949-295-0989

Email: [info@dmbraunco.com](mailto:info@dmbraunco.com)

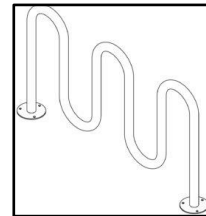
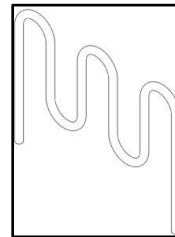
**AVE-BR001 – "S" Style Bike Rack, Five Spaces, Embedded Mount**

**AVE-BR002 – "S" Style Bike Rack, Five Spaces, Surface Mount**



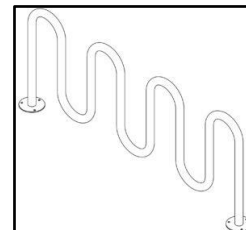
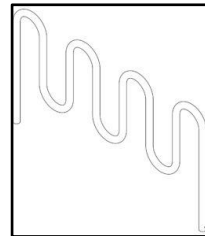
**AVE-BR003 – "S" Style Bike Rack, Seven Spaces, Embedded Mount**

**AVE-BR004 – "S" Style Bike Rack, Seven Spaces, Surface Mount**



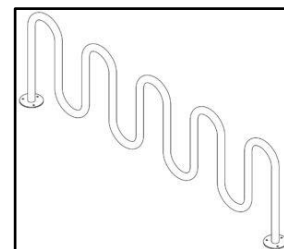
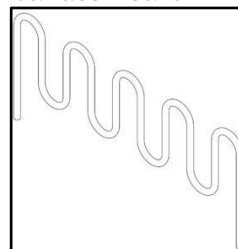
**AVE-BR005 – "S" Style Bike Rack, Nine Spaces, Embedded Mount**

**AVE-BR006 – "S" Style Bike Rack, Nine Spaces, Surface Mount**



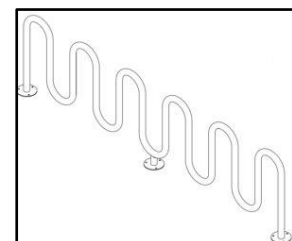
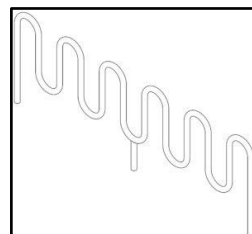
**AVE-BR007 – "S" Style Bike Rack, Eleven Spaces, Embedded Mount**

**AVE-BR008 – "S" Style Bike Rack, Eleven Spaces, Surface Mount**



**AVE-BR009 – "S" Style Bike Rack, Thirteen Spaces, Embedded Mount**

**AVE-BR010 – "S" Style Bike Rack, Thirteen Spaces, Surface Mount**





### **Nero Series – Bicycle Rack**

The Nero Series of Bicycle Racks are universal racks for any site. Choose the individual loop option and add as many as you need, or choose the prefabricated options and simply mount the racks using the included base plate. There are many different options and styles available for download below.

#### **Materials:**

Tubing – 2 3/8" dia. schedule 40 steel tubing  
Foot Plates – 7 1/2" dia. x 1/4" stainless steel

#### **Additional Options:**

Choose two, six or ten capacity; embedded or surface mount.

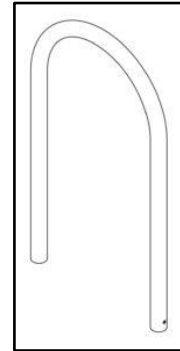
Powder coat finish to match any RAL color: RAL Color Book Or choose Duracoat finish for extra durability. Additional options are galvanized or stainless steel finish.

Contact DM Braun & Company for Dimensions, CAD Files and more information:

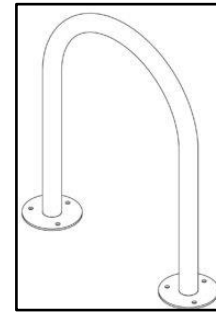
Phone: 949-295-0989

Email: [info@dmbraunco.com](mailto:info@dmbraunco.com)

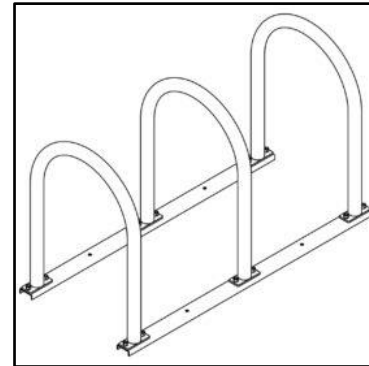
#### **NERO-NE001- Bike Rack, Single Loop, Embedded Mount**



#### **NERO-NE002 -Bike Rack, Single Loop, Surface Mount**



#### **NERO-NE003 – Bike Rack, Three Loop, Surface Mount**



#### **NERO-NE004 – Bike Rack, Five Loop, Surface Mount**

